

Office/Dental Space for Lease

Suite 1 1,000 Sq. Ft. \$3.25 per sq. ft. + utilities

850 Prospect Street
La Jolla, California 92037



GREG WAGNER | gwagner@cgpinc.com
858.729.9306 | Lic. No. 01120775

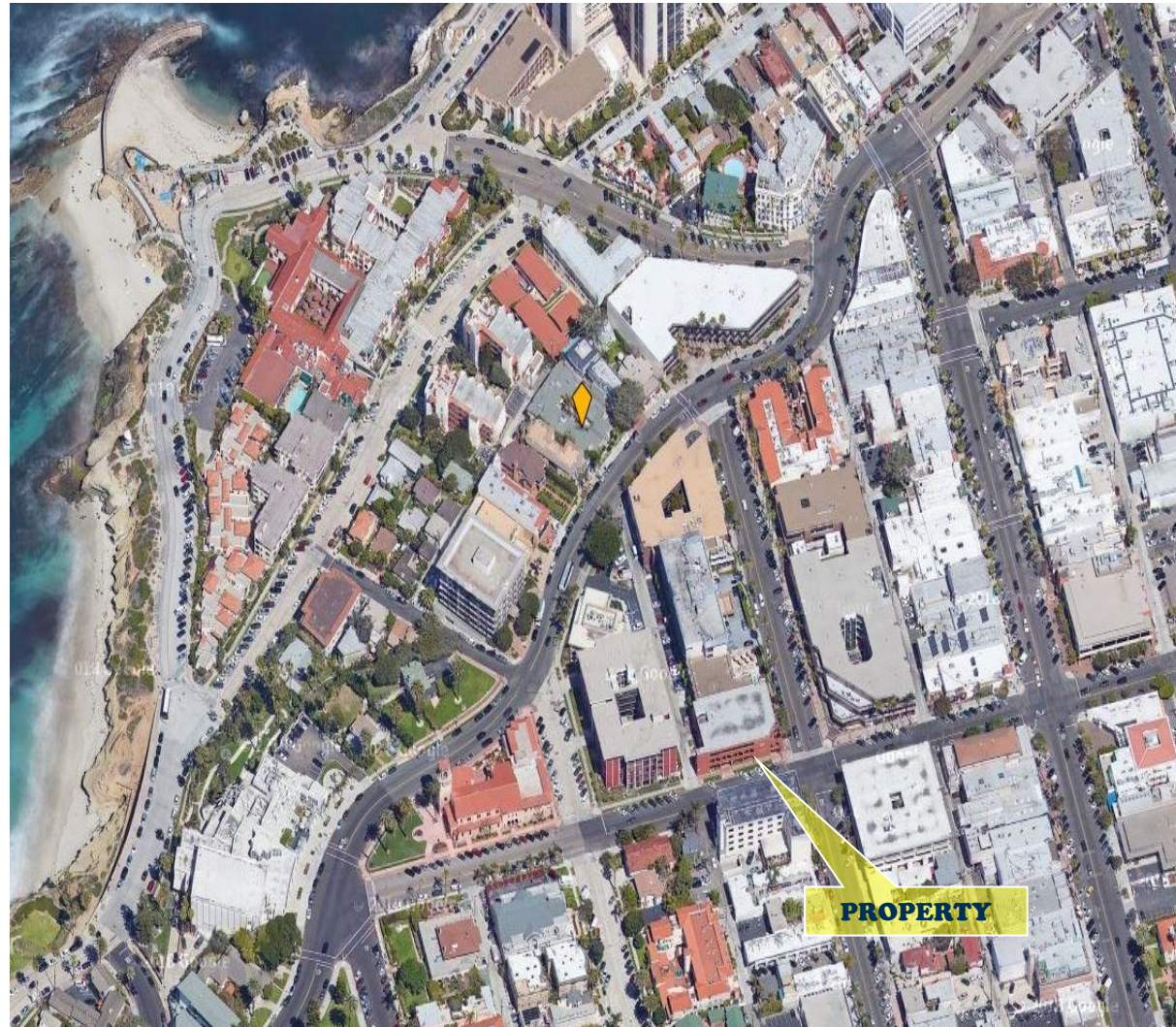
 **CAPITAL GROWTH**
PROPERTIES, INC.

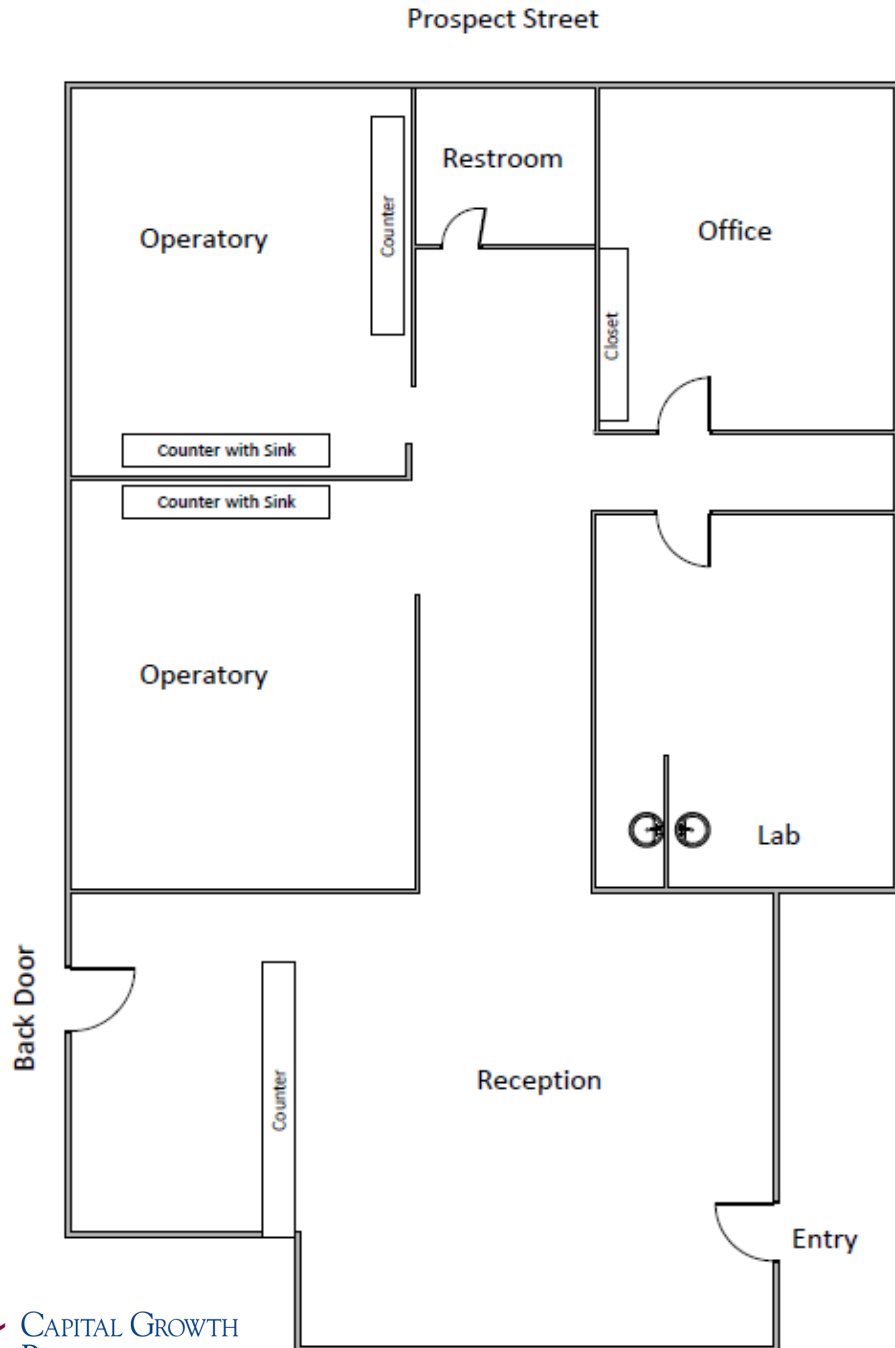
JILL MORTON | jmorton@cgpinc.com
619.955.2877 | Lic. No. 00868254

Information contained herein has been obtained from sources that we deem reliable. We have no reason to doubt its accuracy, but we do not guarantee it.

**La Jolla Dental/
Medical/General Office
Leasing Opportunity!**

- > Convenient visitor & tenant parking
- > Immaculately maintained property
- > In the heart of all La Jolla's amenities
- > Walkability score: 98





Suite 1 Floorplan

> 1000 Square feet

> Fully equipped dental office

> Street Front

