

OFFICE SPACE FOR LEASE

1501 5th Avenue
2,675 - 32,464 SF



CAPITAL GROWTH
PROPERTIES, INC.

JILL MORTON

619.955.2877

jmorton@cgpinc.com

CalBRE Lic: 00868254

Property Highlights

- Prominent Building Signage
- Easy Freeway Access.
- Marble Floor Entryway
- Bay & City Views!
- Private elevator to suites
- Balconies
- Great location!
Walking distance to restaurants and shops
- Free Garage Parking (52 Spaces)



OFFICE SPACE For Lease

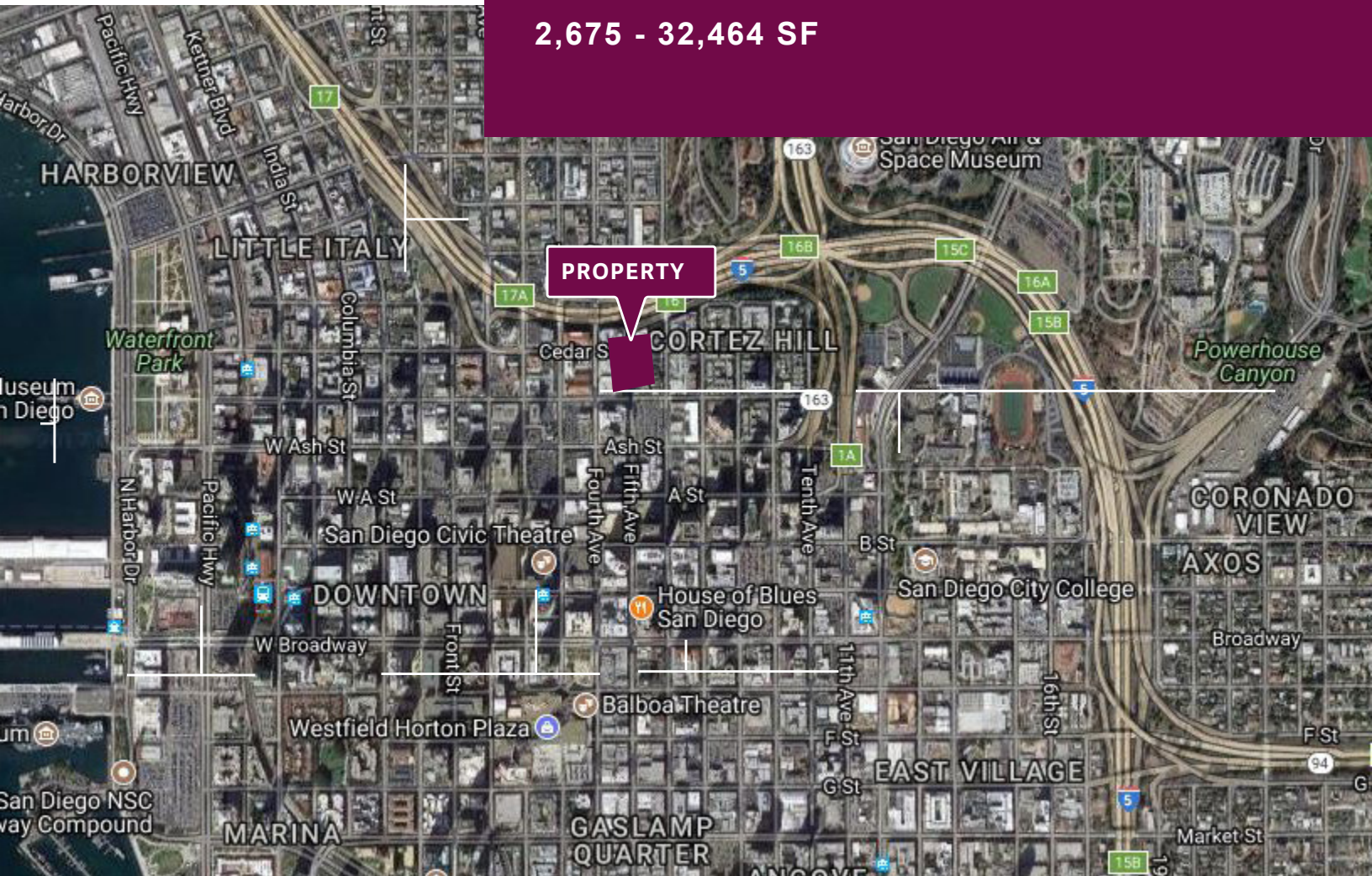
1st, 2nd, 3rd & 4th Floors
2,675 - 32,464 SF



AVAILABILITY	
SUITE	SQ.FT
100	4,505
201	2,675
202/203	5,424
300	9,930
400	9,930

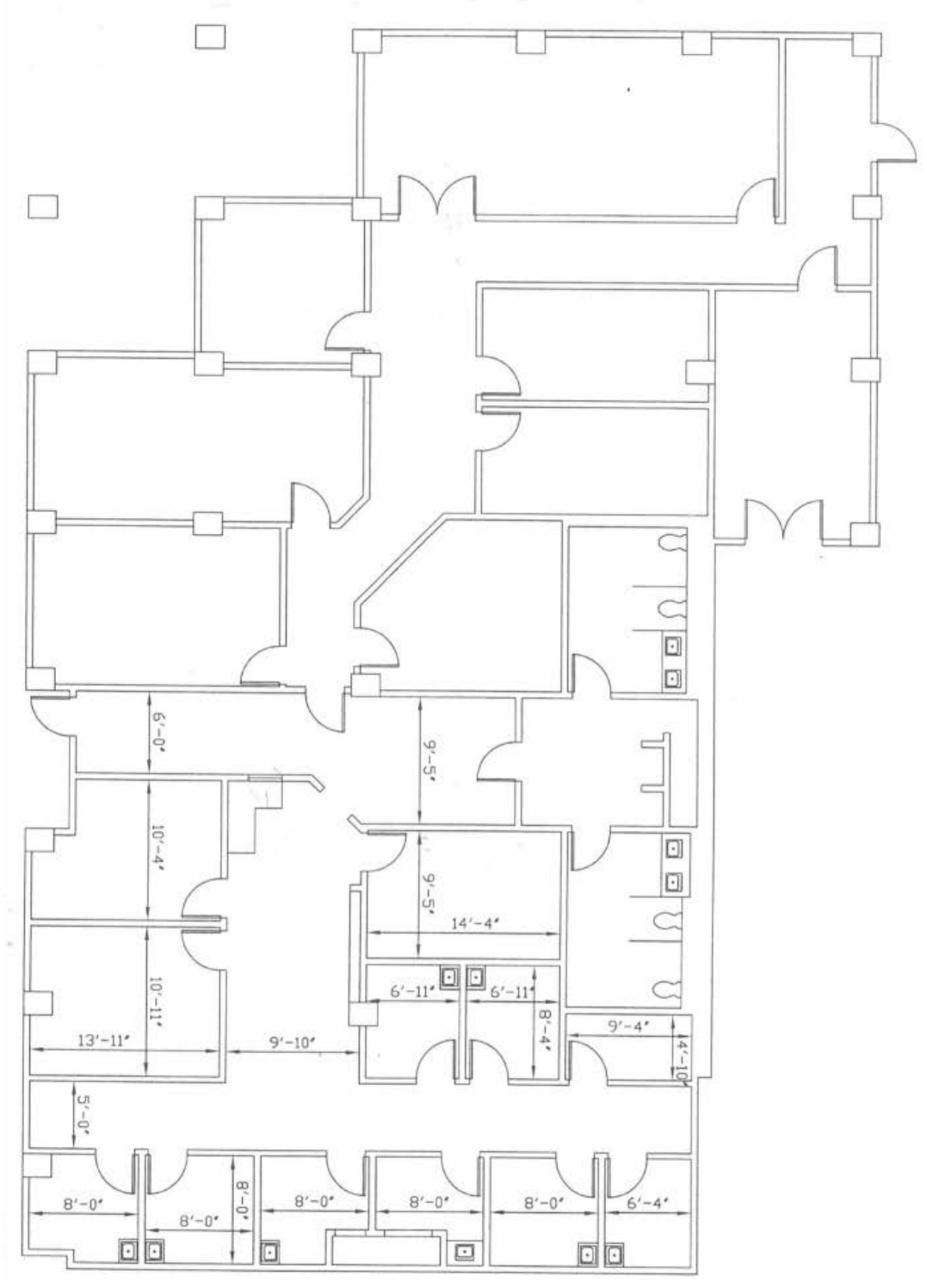
Location

2,675 - 32,464 SF



First Floor Plan

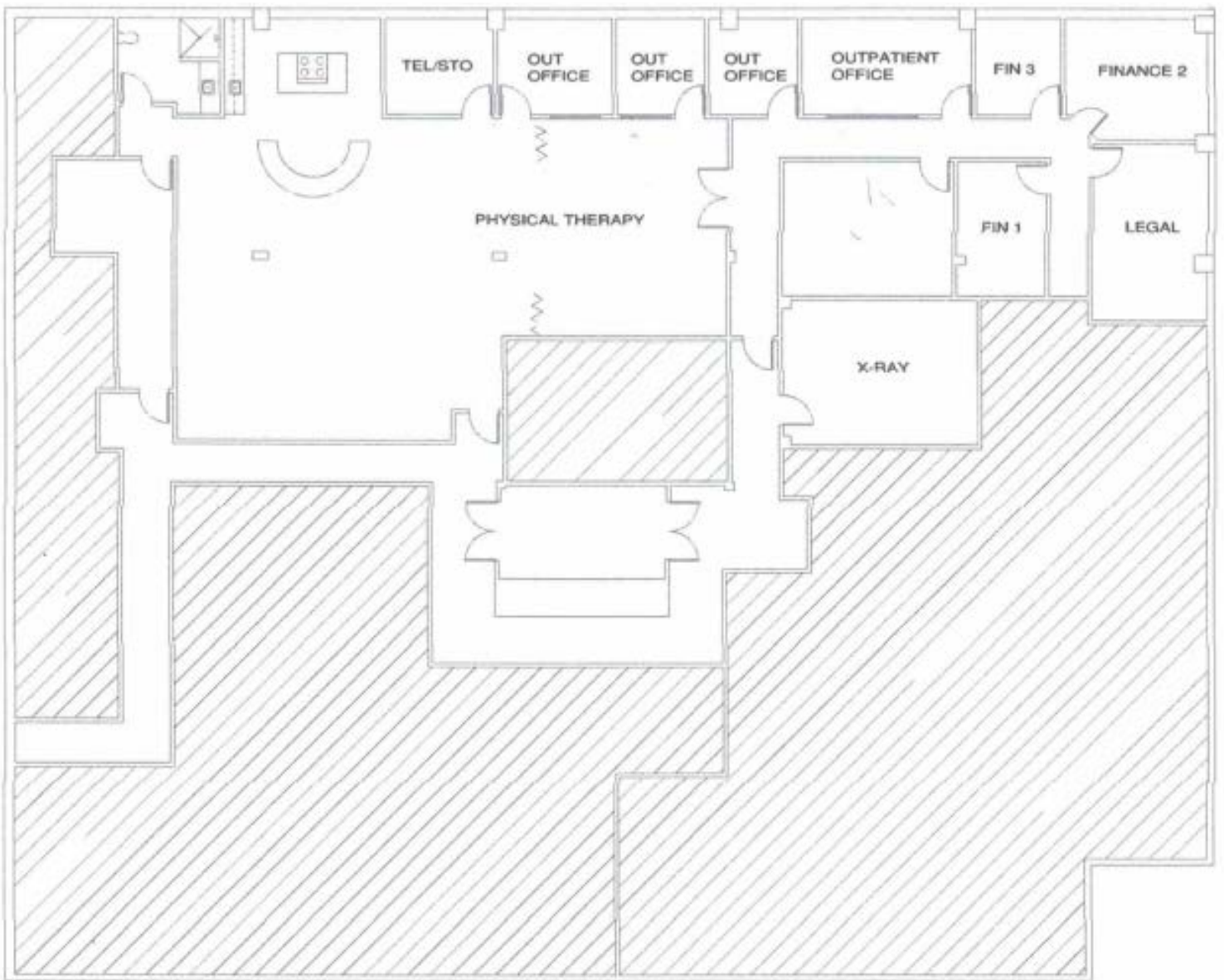
4,505 SF



Second Floor Plan

(Not as-built)

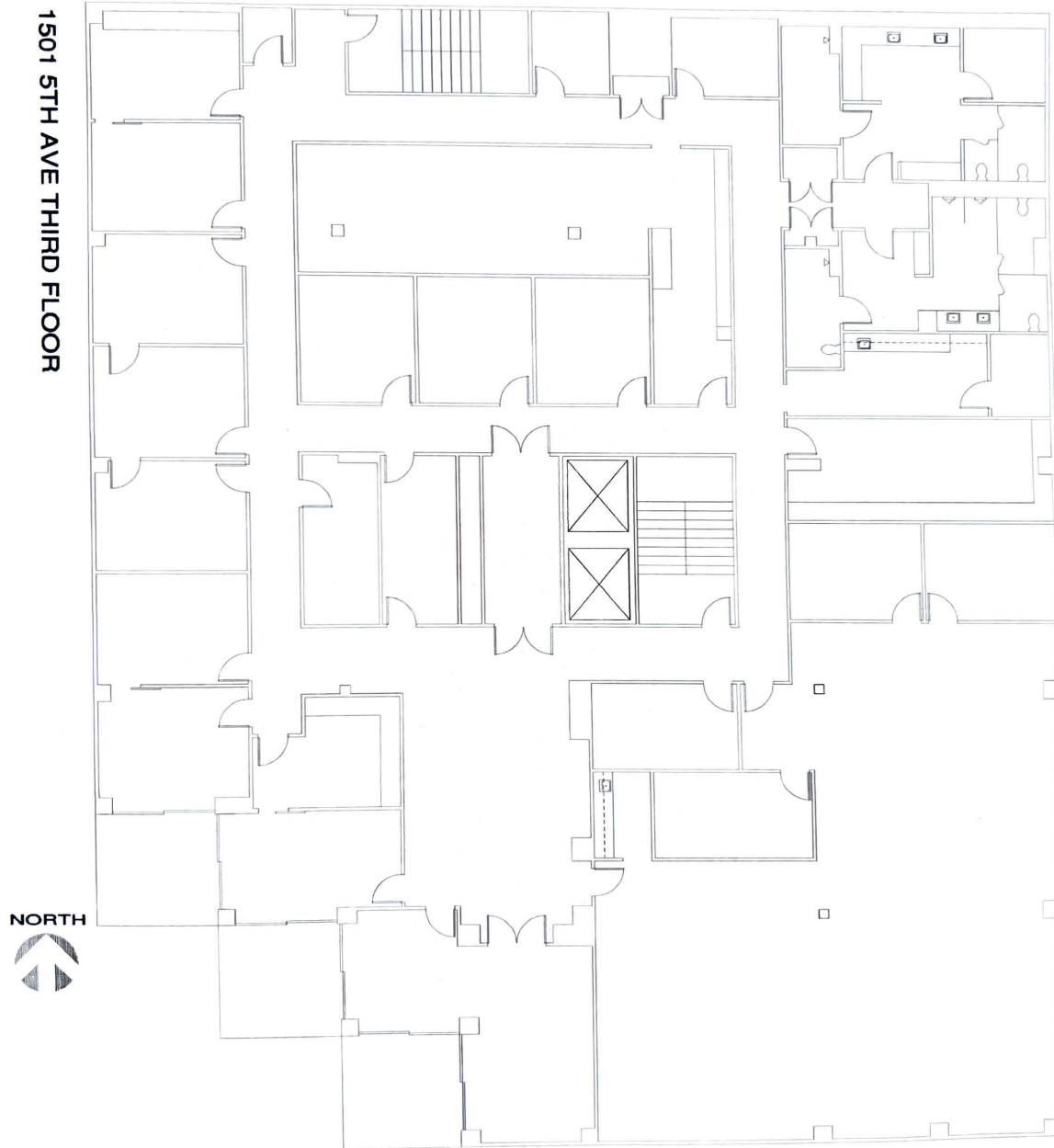
8,099 SF



Third Floor Plan

(As-built)

9,930 SF



Fourth Floor Plan

9,930 SF

1501 5TH AVE FOURTH FLOOR

