

# For Lease

1005 Rosecrans Street  
San Diego, California 92106



CAPITAL GROWTH  
PROPERTIES, INC.

## Point Loma Office Space

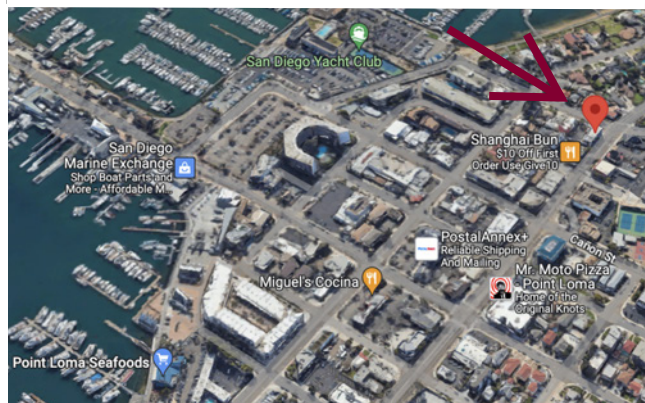


## Property Highlights

- **Prime Location:** Steps away from acclaimed restaurants and amenities
- **Elite Neighborhood:** Positioned in an upscale residential and trade zone
- **Inspiring Ambiance:** Bright office space accentuated by stunning views
- **Contemporary Design:** Featuring modern high-beam, exposed ceilings
- **Executive Suite:** Glass-enclosed office, complete with a kitchenette
- **Iconic Proximity:** Minutes from the San Diego Yacht Club, Liberty Station, and the picturesque San Diego Bay

## Available Space

| Suite | SF    | Monthly Rate         |
|-------|-------|----------------------|
| 201   | 1,305 | \$3.25 / SF<br>Gross |



CAPITAL GROWTH  
PROPERTIES, INC.

cgpincre.com

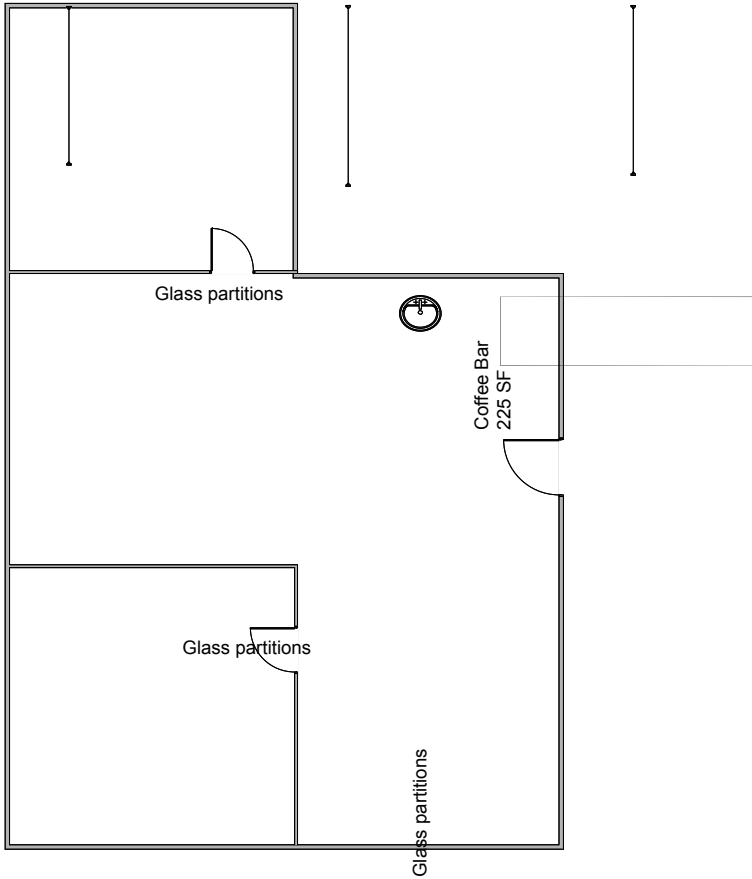
# For Lease

1005 Rosecrans Street  
San Diego, California 92106



CAPITAL GROWTH  
PROPERTIES, INC.

## Suite 201





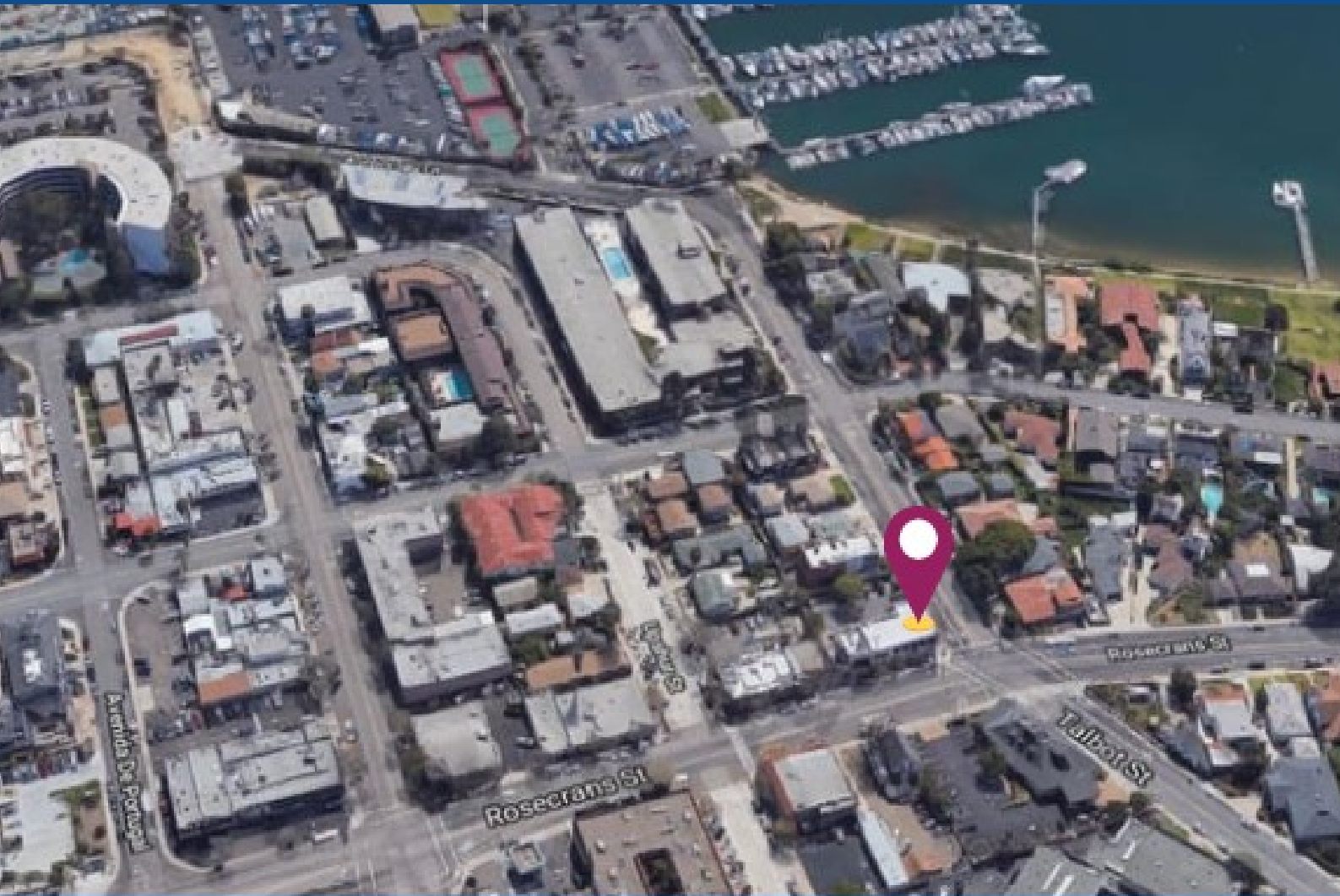
# For Lease

1005 Rosecrans Street  
San Diego, California 92106



# For Lease

1005 Rosecrans Street  
San Diego, California 92106







**This beautiful Point Loma office is available immediately!**



## Jill Morton

Senior Vice President  
jmorton@cgpinc.com  
615.955.2877  
Lic. 00868254

## Capital Growth Properties, Inc.

-  1120 Silverado Street, Suite 200  
La Jolla, CA 92037
-  858.729.9300
-  [www.cgpinc.com](http://www.cgpinc.com)
-  [@cgpinc.com](https://www.instagram.com/cgpinc.com)