

# For Lease

2255 Avenida De La Playa  
La Jolla, California 92037



CAPITAL GROWTH  
PROPERTIES, INC.



La Jolla  
Office Space

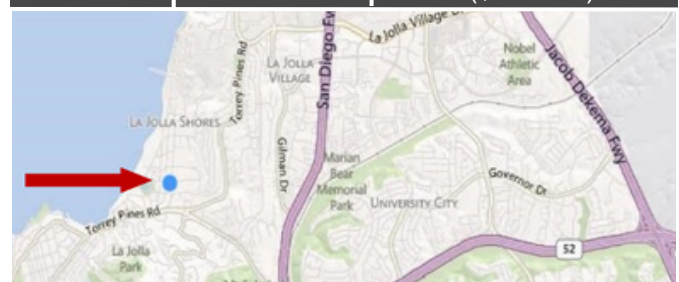
## Property Highlights

### Recent Upgrades Include:

- ✓ New Flooring
- ✓ Upgraded Lighting
- ✓ Stylish Window Coverings
- ✓ Fresh Paint

## Available Space

Suite	Size (SF)	Rate
3	723	\$2.25 PSF + CAM (\$ .66PSF)
6	632	\$2.25 PSF + CAM (\$ .66 PSF)
9	822	\$2.25 PSF + CAM (\$ .66 PSF)

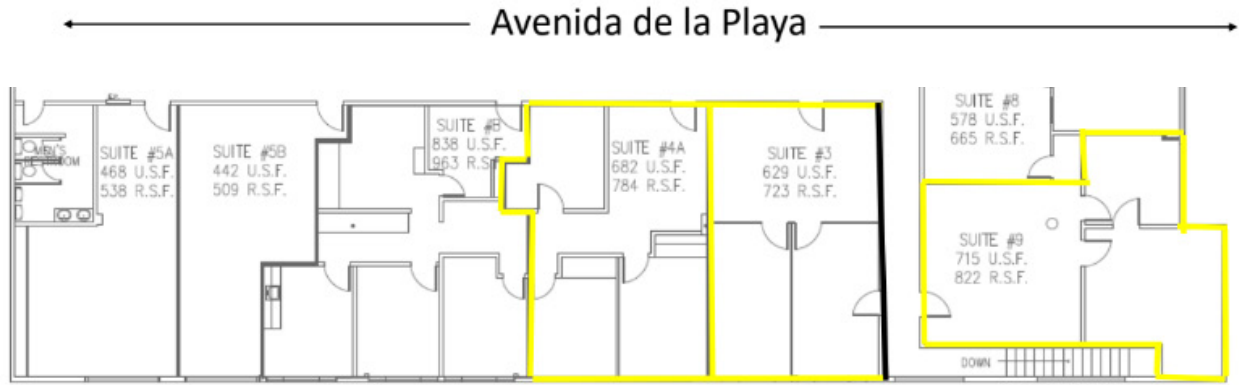


# For Lease

2255 Avenida De La Playa  
La Jolla, California 92037



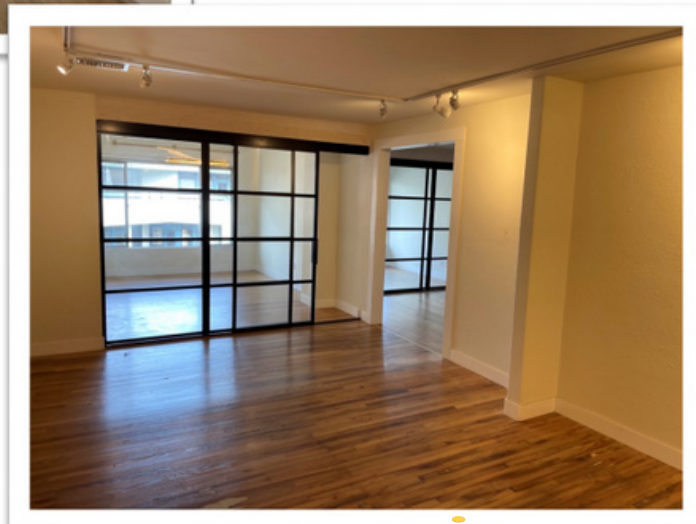
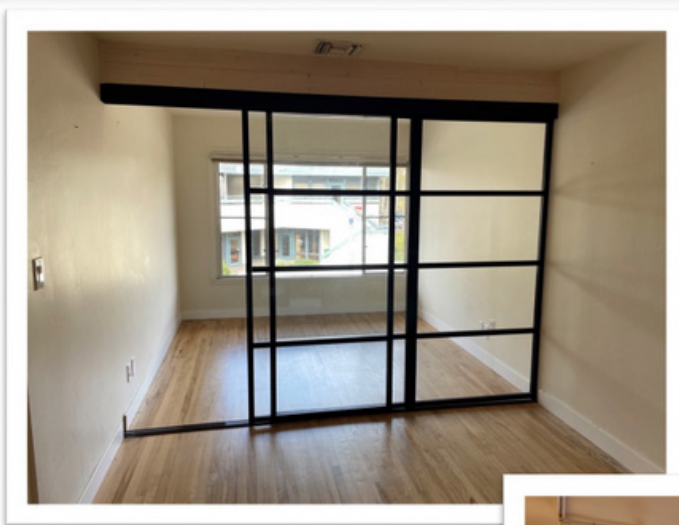
# CAPITAL GROWTH PROPERTIES, INC.



**RBN DESIGN**  
COMMERCIAL INTERIORS  
619.297.1011 | [RBN-DESIGN.com](http://RBN-DESIGN.com)

Second Floor  
2255 Avenida De La Playa  
La Jolla, California 92037

AS-BUILT PLAN  
May 7, 2019  
Scaled To Fit





# For Lease

2255 Avenida De La Playa  
La Jolla, California 92037



CAPITAL GROWTH  
PROPERTIES, INC.



## Todd Law

Senior Vice President  
tlaw@cgpinc.com  
858.729.9305  
Cal BRE Lic. 01309241  
WA BRE Lic. 21200



## Greg Wagner

Senior Vice President  
gwagner@cgpinc.com  
858.729.9306  
Cal BRE Lic. 01120775



CAPITAL GROWTH  
PROPERTIES, INC.



1120 Silverado Street, Suite 200  
La Jolla, CA 92037



858.729.9300



[www.cgpinc.com](http://www.cgpinc.com)



@cgpinc