

For Lease

1005 Rosecrans Street
San Diego, California 92106



CAPITAL GROWTH
PROPERTIES, INC.

Point Loma Office Space

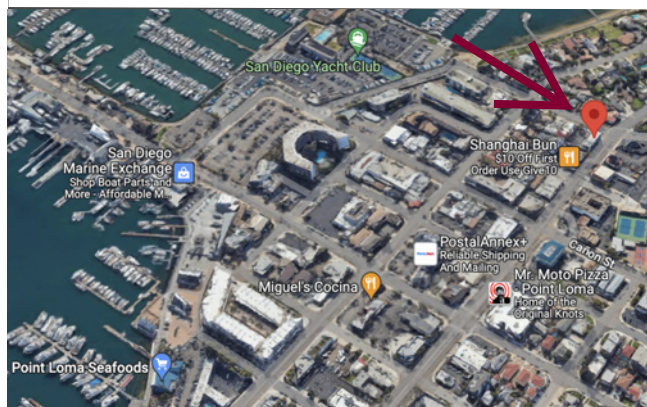


Property Highlights

- **Prime Location:** Steps away from acclaimed restaurants and amenities
- **Elite Neighborhood:** Positioned in an upscale residential and trade zone
- **Inspiring Ambiance:** Bright office space accentuated by stunning views
- **Contemporary Design:** Featuring modern high-beam, exposed ceilings
- **Executive Suite:** Glass-enclosed office, complete with a kitchenette
- **Iconic Proximity:** Minutes from the San Diego Yacht Club, Liberty Station, and the picturesque San Diego Bay

Available Space

Suite	SF	Monthly Rate
201	1,305	\$3.25 / SF Gross



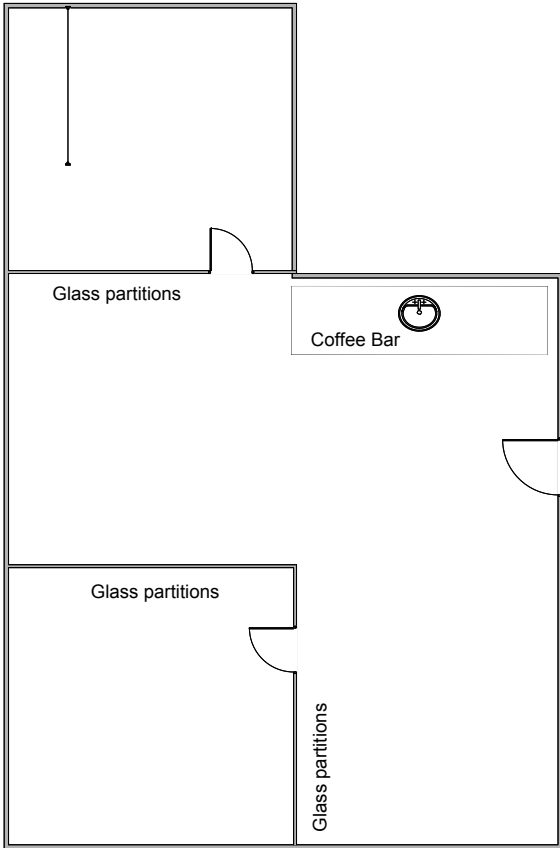
For Lease

1005 Rosecrans Street
San Diego, California 92106



CAPITAL GROWTH
PROPERTIES, INC.

Suite 201



For Lease

1005 Rosecrans Street
San Diego, California 92106



For Lease

1005 Rosecrans Street
San Diego, California 92106



CAPITAL GROWTH
PROPERTIES, INC.



This beautiful Point Loma office is available immediately!



Jill Morton


Senior Vice President

jmorton@cgpinc.com

615.955.2877

Lic. 00868254

Capital Growth Properties, Inc.

 1120 Silverado Street, Suite 200
La Jolla, CA 92037

 858.729.9300

 www.cgpinc.com

 [@cgpinc.com](https://www.instagram.com/cgpinc.com)