

For Sublease

1120 Silverado Street, Suite 202
La Jolla, California 92037



CAPITAL GROWTH
PROPERTIES, INC.



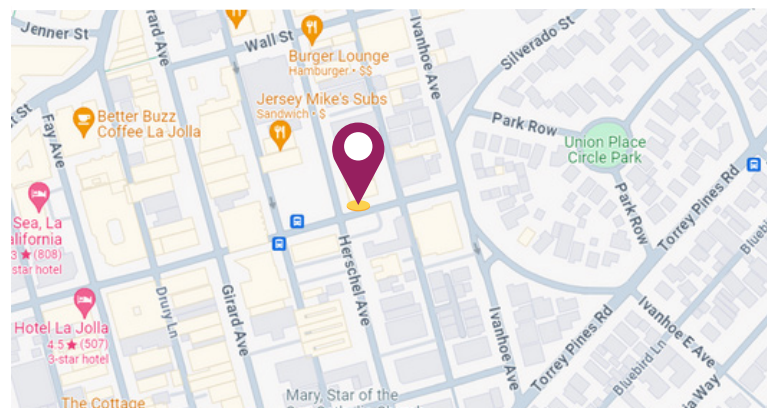
La Jolla
Office Space

Property Highlights

- **Private Office Suite:** Secure and exclusive workspace.
- **Convenient Facilities:** Access to common restrooms.
- **Strategic Location:** Situated in the vibrant heart of the Village of La Jolla.
- **Sublease Term:** Expires 11/30/2025.
- **Nearby Shipping Services:** Close proximity to essential shipping services.

Available Space

Suite	SF	Monthly Rate
202	218	\$695 + WST + electric

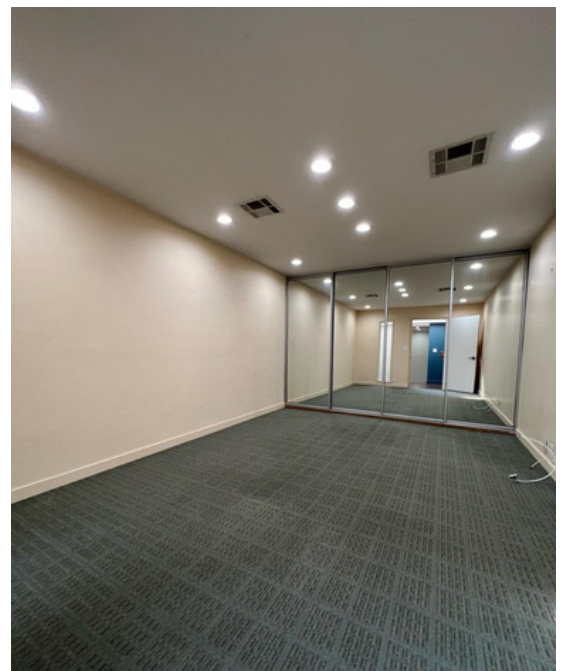


For Sublease

1120 Silverado Street, Suite 202
La Jolla, CA 92037



CAPITAL GROWTH
PROPERTIES, INC.

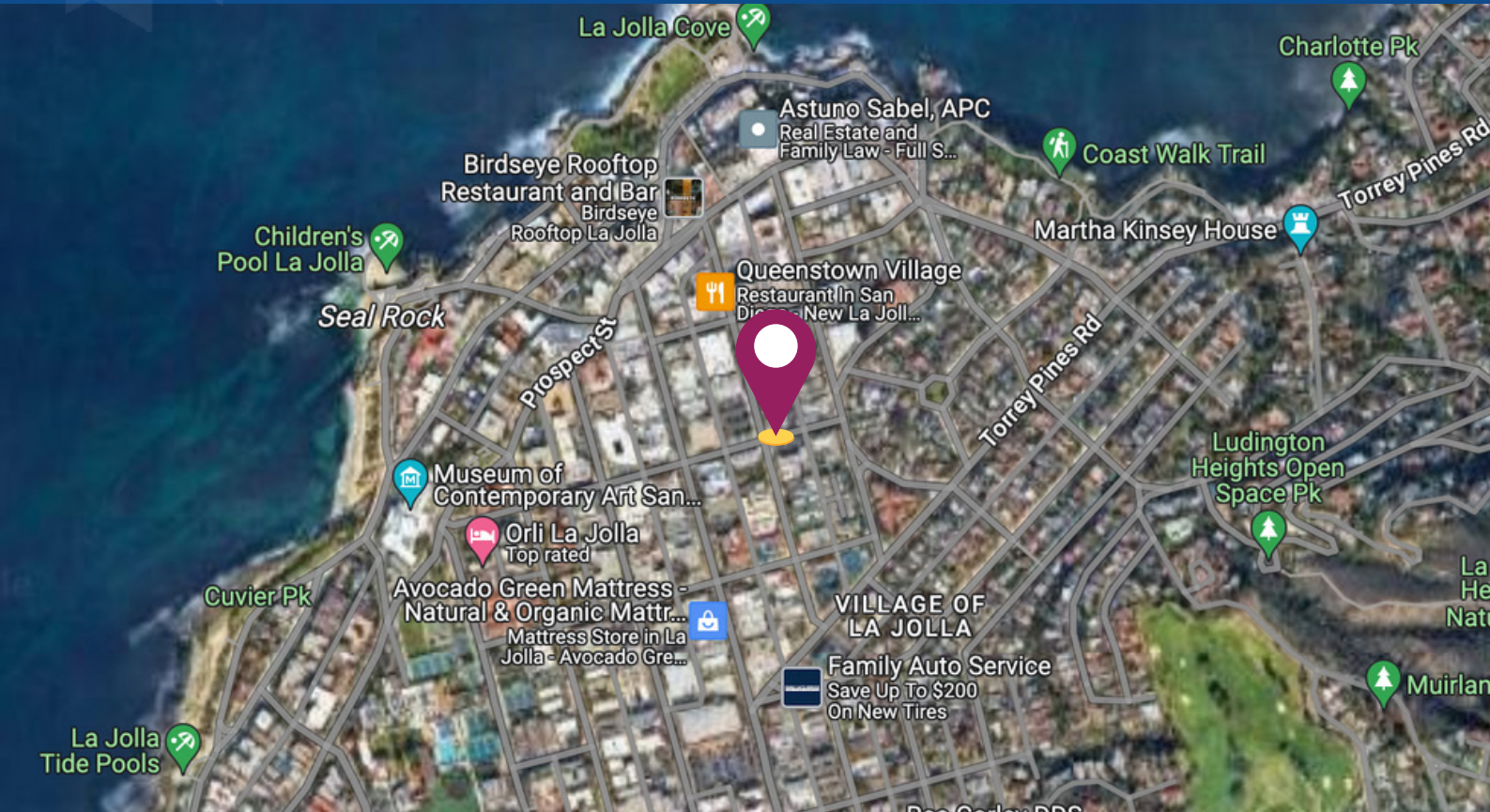


For Sublease

1120 Silverado Street, Suite 202
La Jolla, CA 92037



CAPITAL GROWTH
PROPERTIES, INC.







Sublease this beautiful office space today!



Todd Law

Senior Vice President
tlaw@cgpinc.com
858.729.9305
Cal Bre Lic 01309241
WA BRE Lic. 27587

Capital Growth Properties, Inc.

-  1120 Silverado Street, Suite 200
La Jolla, CA 92037
-  858.729.9300
-  www.cgpinc.com
-  @cgpinc