

For Lease

2255 Avenida De La Playa
La Jolla, California 92037



CAPITAL GROWTH
PROPERTIES, INC.



La Jolla
Office Space

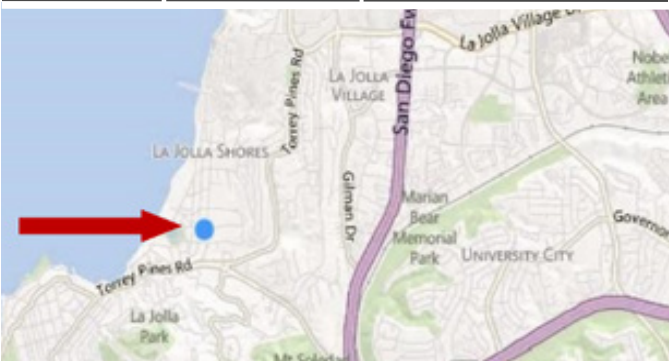
Property Highlights

Recent Upgrades Include:

- ✓ New Flooring
- ✓ Upgraded Lighting
- ✓ Stylish Window Coverings
- ✓ Fresh Paint

Available Space

Suite	Size	Rate
3	723	\$2.25 PSF + CAM (\$.66PSF)
9	822	\$2.25 PSF + CAM (\$.66 PSF)



CAPITAL GROWTH
PROPERTIES, INC.

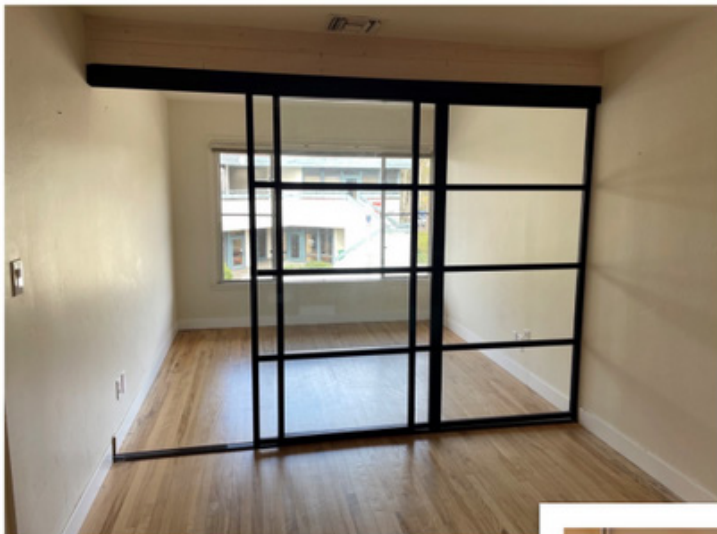
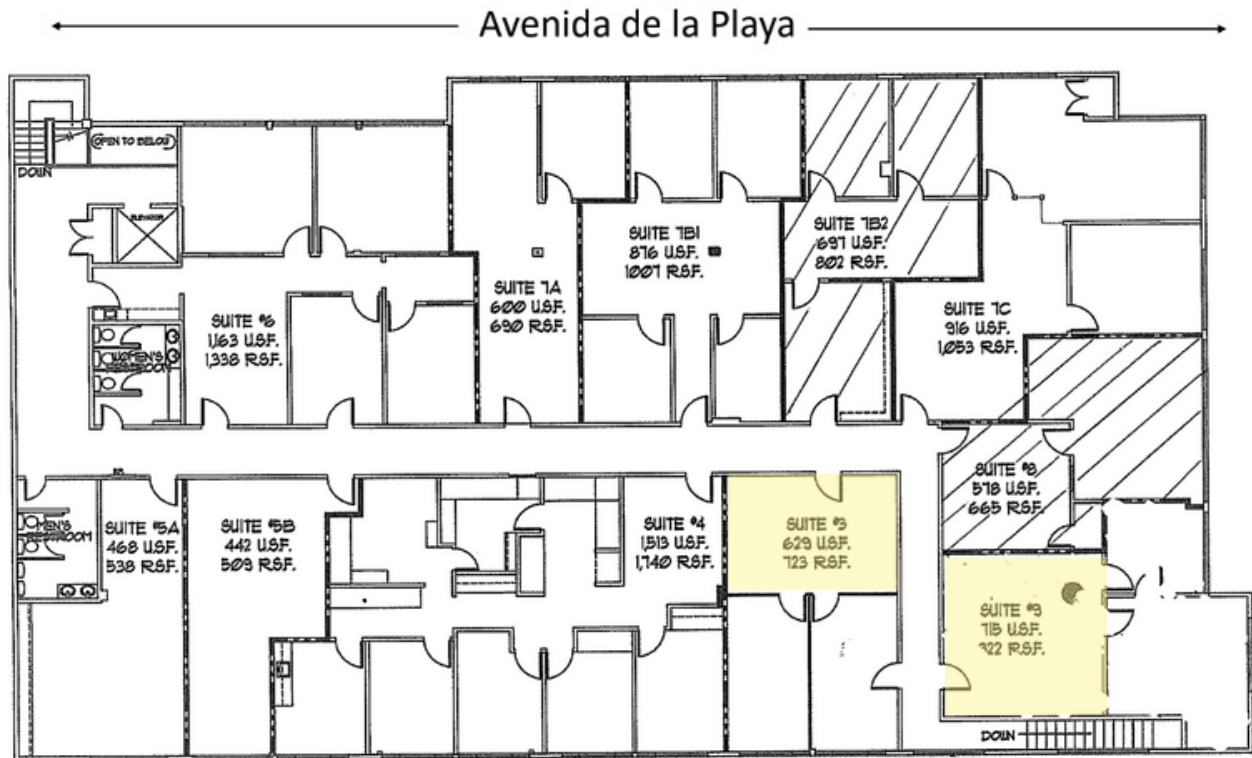
cgpincre.com

For Lease

2255 Avenida De La Playa
La Jolla, California 92037



CAPITAL GROWTH
PROPERTIES, INC.



CAPITAL GROWTH
PROPERTIES, INC.

cgpinc.com

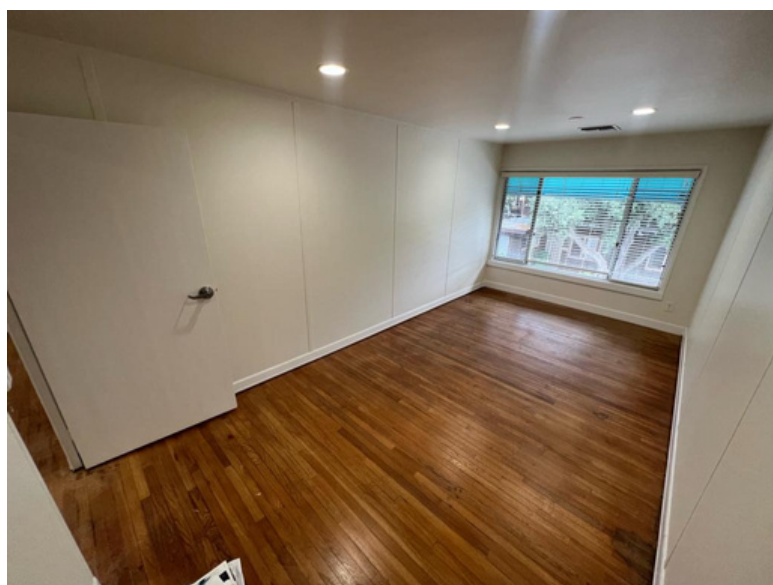
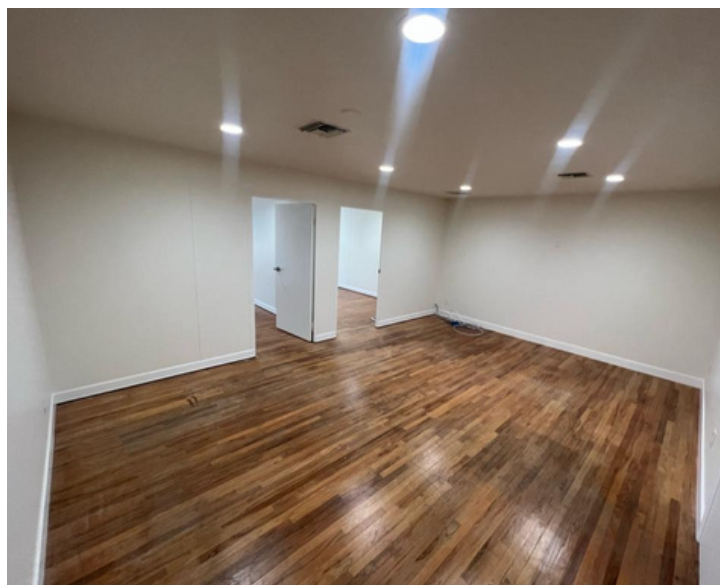
For Lease

2255 Avenida De La Playa
La Jolla, California 92037



CAPITAL GROWTH
PROPERTIES, INC.

Suite 3



For Lease

2255 Avenida De La Playa
La Jolla, California 92037



CAPITAL GROWTH
PROPERTIES, INC.

Suite 9



For Lease

2255 Avenida De La Playa
La Jolla, California 92037



CAPITAL GROWTH
PROPERTIES, INC.



Todd Law

Senior Vice President
tlaw@cgpinc.com
858.729.9305
Cal BRE Lic. 01309241
WA BRE Lic. 27587



Greg Wagner

Senior Vice President
gwagner@cgpinc.com
858.729.9306
Cal BRE Lic. 01120775



CAPITAL GROWTH
PROPERTIES, INC.



1120 Silverado Street, Suite 200
La Jolla, CA 92037



858.729.9300



www.cgpinc.com



@cgpinc



CAPITAL GROWTH
PROPERTIES, INC.

cgpinc.com