

For Lease

La Jolla Pacific Building
7910-7918 Ivanhoe Avenue
La Jolla, CA 92037



CAPITAL GROWTH
PROPERTIES, INC.



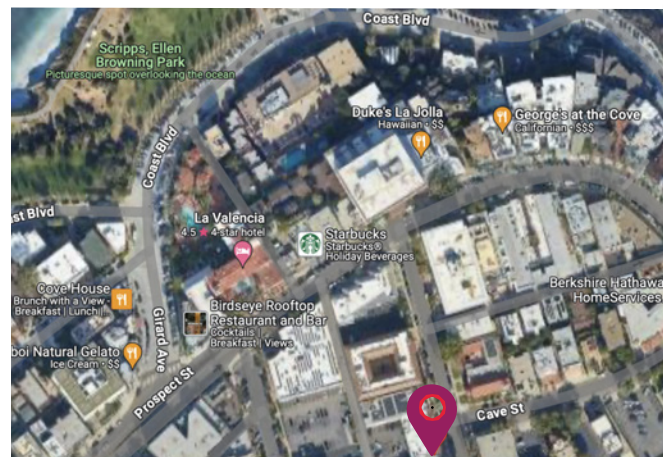
La Jolla
Retail/Office Space

Property Highlights

- **High-Visibility Storefront:** Strategically located near the bustling heart of the Village of La Jolla, ensuring optimal exposure.
- **Prime Location:** Surrounded by a variety of renowned restaurants, shops, and professional services, all within easy walking distance.
- **Convenient Building Amenities:** Offers 24-hour building access, efficient HVAC, ample parking, and professional property management.
- **Historic Appeal:** Situated adjacent to the Historic La Jolla Post Office.

Available Space

Unit	Type	SF	Monthly Rate
1	Office	514	\$3.20 / SF + Electricity
7910	Retail	653	\$3.50 / SF + NNN (\$1.00)



CAPITAL GROWTH
PROPERTIES, INC.

cgpinc.com

For Lease

La Jolla Pacific Building
7910-7918 Ivanhoe Avenue
La Jolla, CA 92037



CAPITAL GROWTH
PROPERTIES, INC.



CAPITAL GROWTH
PROPERTIES, INC.

cgpincre.com

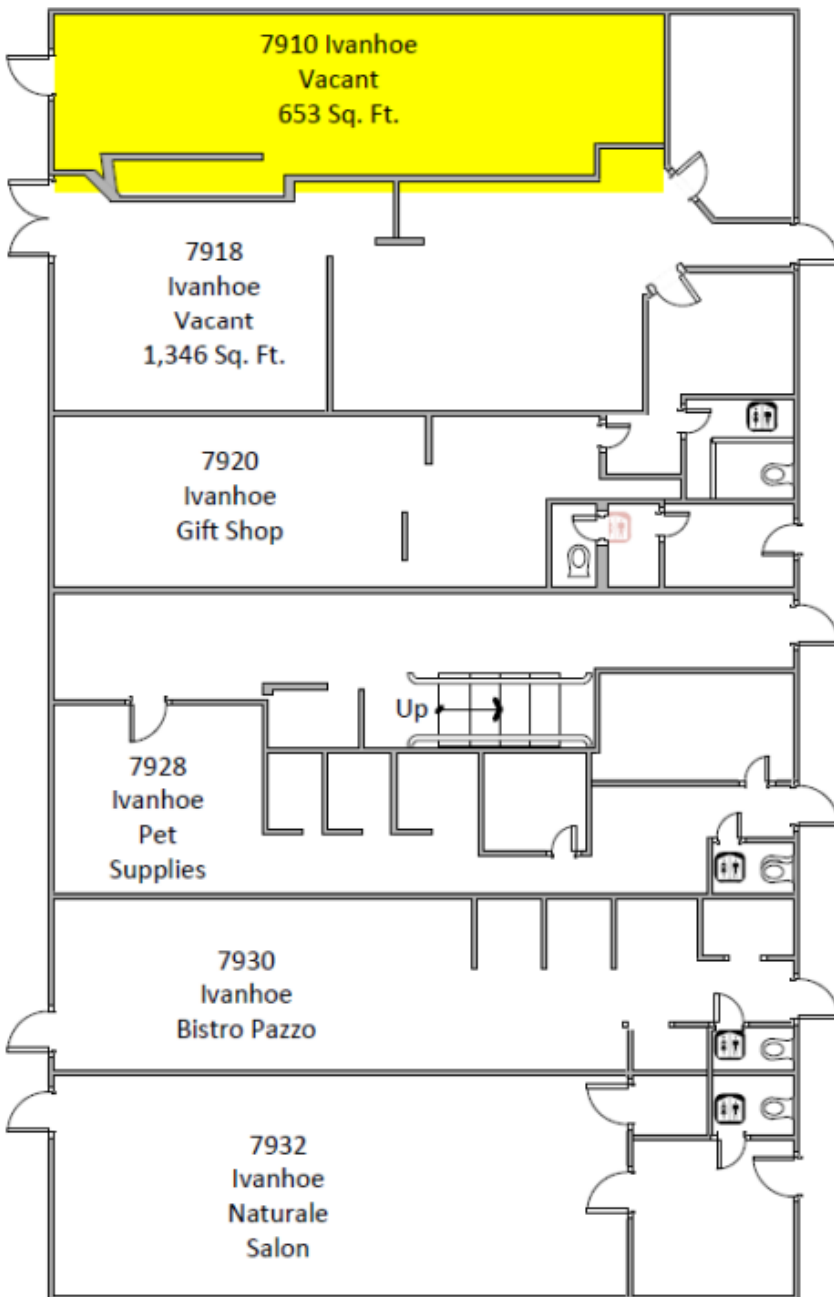
For Lease

La Jolla Pacific Building
7910-7918 Ivanhoe Avenue
La Jolla, CA 92037



CAPITAL GROWTH
PROPERTIES, INC.

Floor Plan - Retail Space at 7910 Ivanhoe



Jill Morton

Senior Vice President
jmorton@cgpinc.com
619.955.2877
Lic: 00868254



CAPITAL GROWTH
PROPERTIES, INC.

cgpinc.com

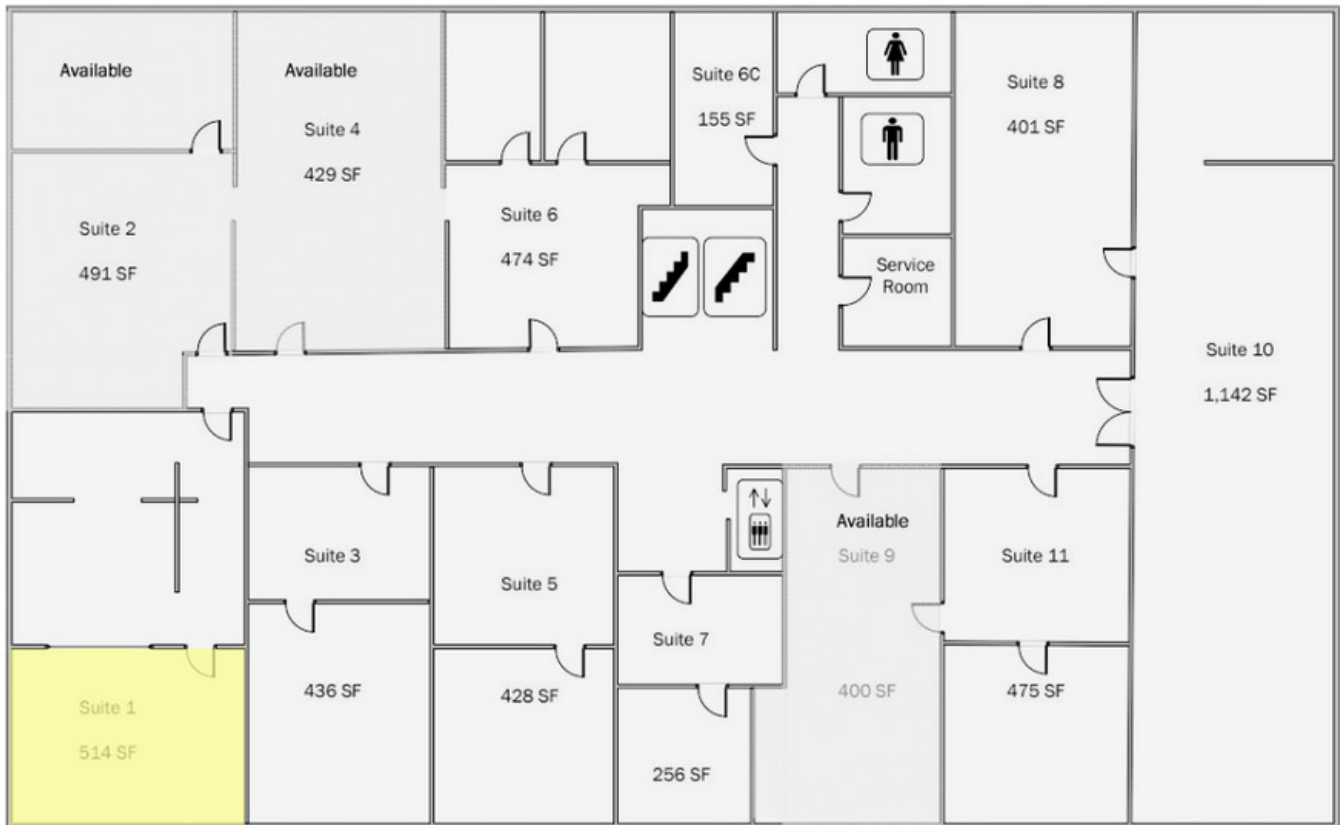
For Lease

La Jolla Pacific Building
7910-7918 Ivanhoe Avenue
La Jolla, CA 92037



CAPITAL GROWTH
PROPERTIES, INC.

Floor Plan - Retail Space at 7910 Ivanhoe



Jill Morton

Senior Vice President
jmorton@cgpinc.com
619.955.2877
Lic: 00868254



Todd Law

Senior Vice President
tlaw@cgpinc.com
858.729.9305
Cal Bre Lic 01309241
WA BRE Lic. 27587



Greg Wagner

Senior Vice President
gwagner@cgpinc.com
858.729.9306
Lic. 01120775



CAPITAL GROWTH
PROPERTIES, INC.

cgpinc.com

For Lease

La Jolla Pacific Building
7910-7918 Ivanhoe Avenue
La Jolla, CA 92037



CAPITAL GROWTH
PROPERTIES, INC.



**The La Jolla Pacific Building -
Office and Retail Space Available Immediately!**



Jill Morton

Senior Vice President
jmorton@cgpinc.com
619.955.2877
Lic: 00868254



Todd Law

Senior Vice President
tlaw@cgpinc.com
858.729.9305
Cal Bre Lic 01309241
WA BRE Lic. 27587



Greg Wagner

Senior Vice President
gwagner@cgpinc.com
858.729.9306
Lic. 01120775

For inquiries regarding the retail space at 7910 Ivanhoe Avenue, contact Jill Morton. For the office space at Suite 1, Jill Morton, Todd Law, or Greg Wagner can assist you with your needs.

Capital Growth Properties, Inc.



1120 Silverado Street, Suite 200
La Jolla, CA 92037



858.729.9300



www.cgpinc.com



@cgpinc



CAPITAL GROWTH
PROPERTIES, INC.

cgpinc.com