

For Lease

6122 Lake Murray Blvd.

La Mesa, CA 91942



CAPITAL GROWTH
PROPERTIES, INC.

La Mesa
Retail Space

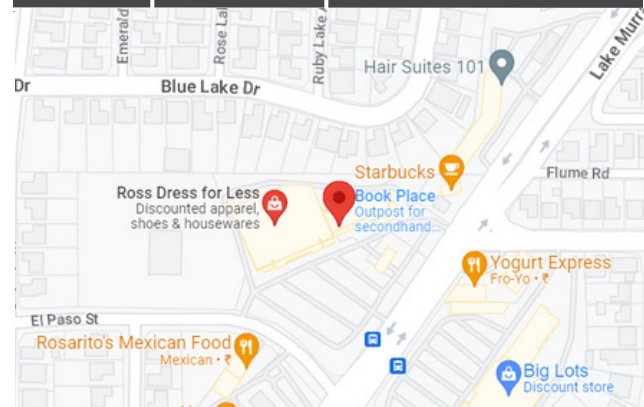


Property Highlights

- **Exceptional Signage & Visibility:** Stand out with prominent signage options, ensuring high visibility to passersby and motorists.
- **Abundant Parking:** Benefit from a generous parking ratio of 9.7 spaces per 1,000 retail SF, offering ample space for your customers and employees.
- **Prime Retail Anchor:** Located in a center anchored by Ross Dress for Less, attracting consistent foot traffic and a diverse customer base.

Available Space

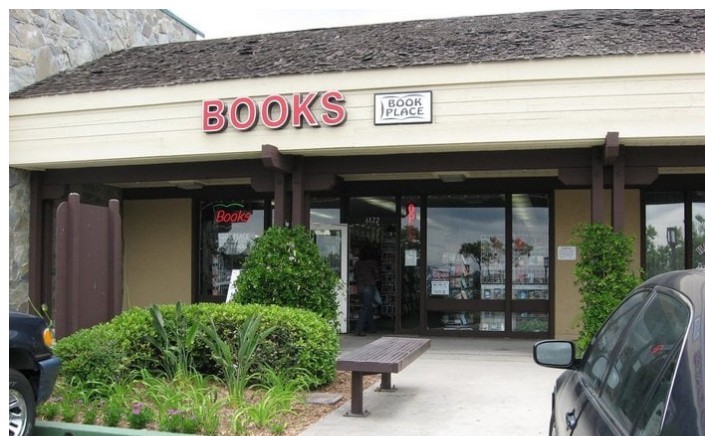
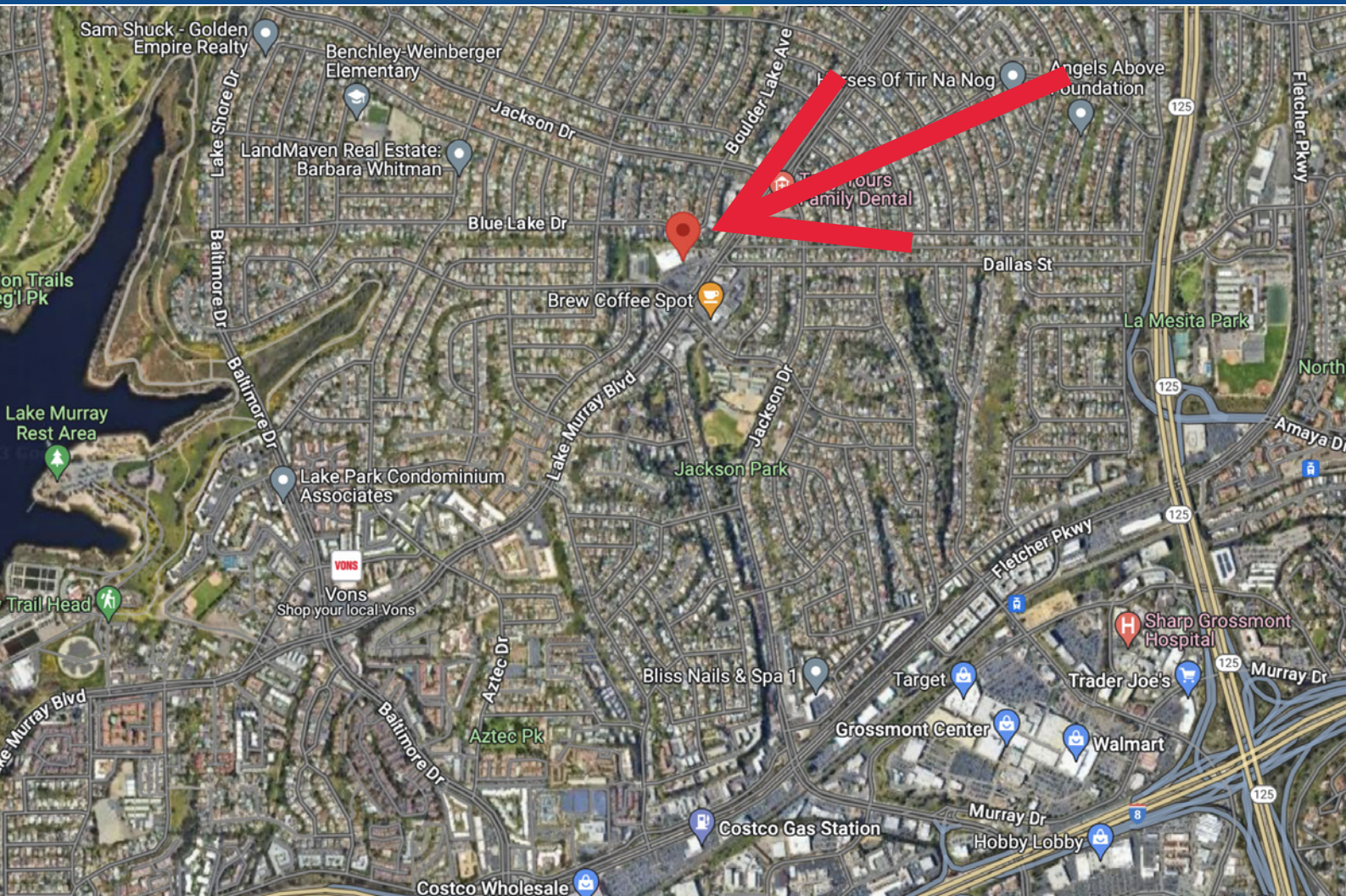
Suite	SF	Monthly Rate
↑ FGG	FÊ €€	ÅĠÈÍ ÁÚØ ÉÁĤPÁÆ €ÁÚØÐ



For Lease: Retail Space | 6122 Lake Murray Blvd., La Mesa, CA 91942



For Lease: Retail Space | 6122 Lake Murray Blvd., La Mesa, CA 91942









*"Todd is an extremely professional Realtor that has helped clients of mine find commercial properties. Whenever I send a client his way, I know that they will be very well taken care of and I get nothing but rave reviews. I highly recommend **Todd Law!**"*
- Alan Cox



Todd Law

Placeholder text for Todd Law's bio.

Capital Growth Properties, Inc.

-  1120 Silverado Street, Suite 200
La Jolla, CA 92037
-  858.729.9300
-  www.cgpincre.com
-  [@cgpincre.com](https://www.instagram.com/cgpincre.com)