

For Lease

2255 Avenida De La Playa
La Jolla, California 92037



CAPITAL GROWTH
PROPERTIES, INC.



La Jolla
Office Space

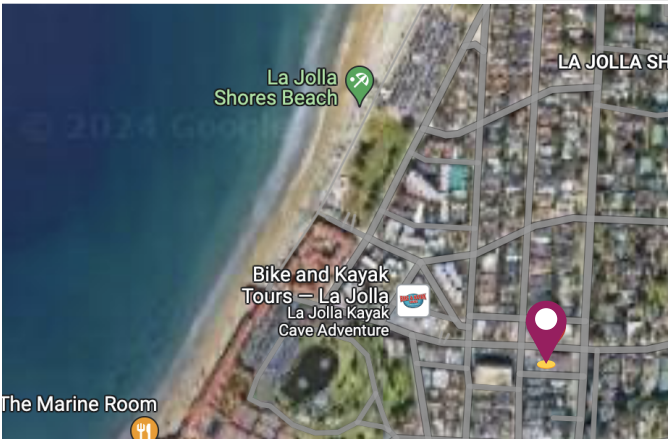
Property Highlights

Recent Upgrades Include:

- ✓ New Flooring
- ✓ Upgraded Lighting
- ✓ Stylish Window Coverings
- ✓ Fresh Paint

Available Space

Suite	Size	Rate
3	723	\$2.25 PSF + CAM (\$.66PSF)



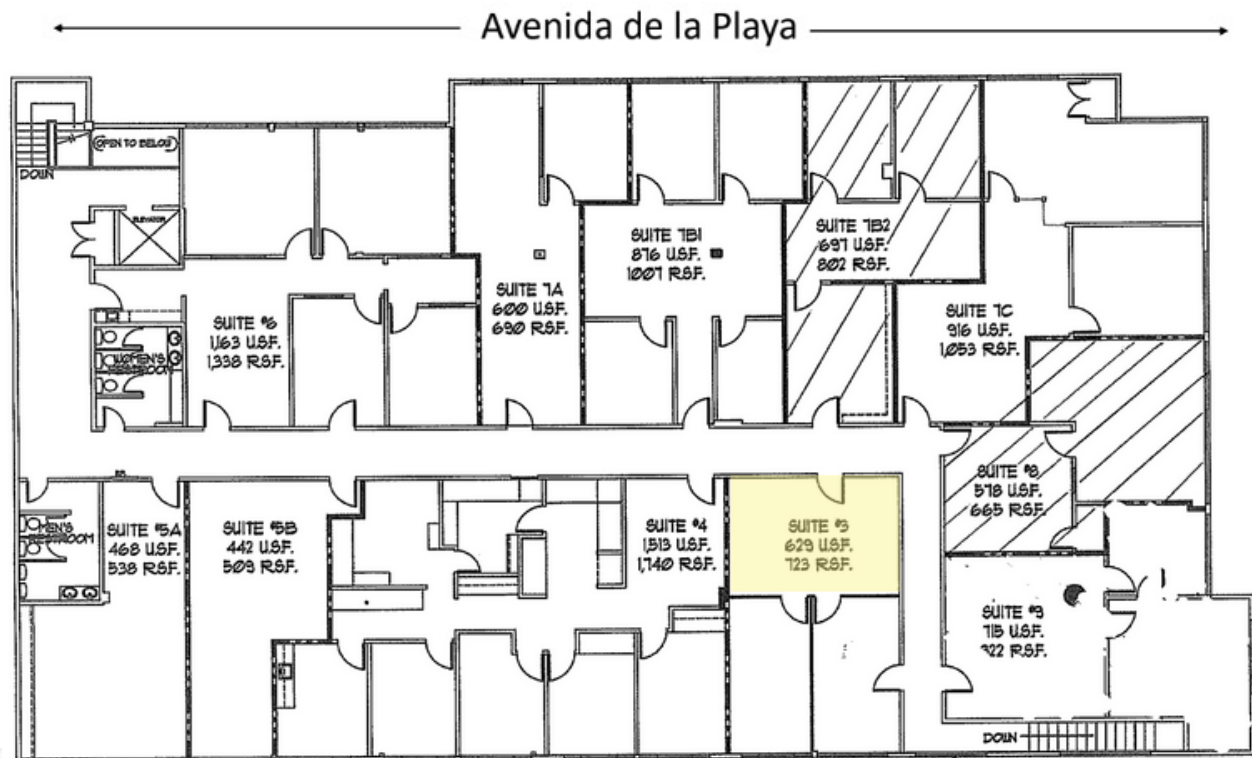
CAPITAL GROWTH
PROPERTIES, INC.

cgpinc.com

**2255 Avenida De La Playa
La Jolla, California 92037**



CAPITAL GROWTH
PROPERTIES, INC.



CAPITAL GROWTH
PROPERTIES, INC.

cgpincre.com

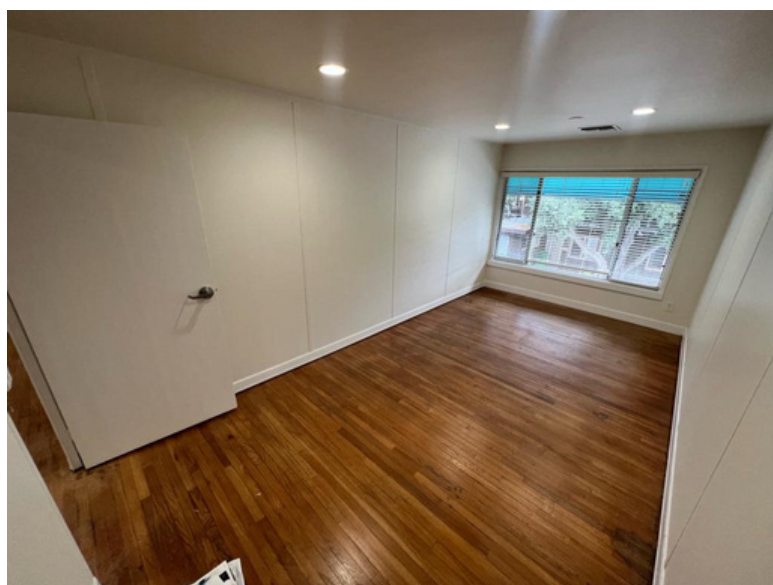
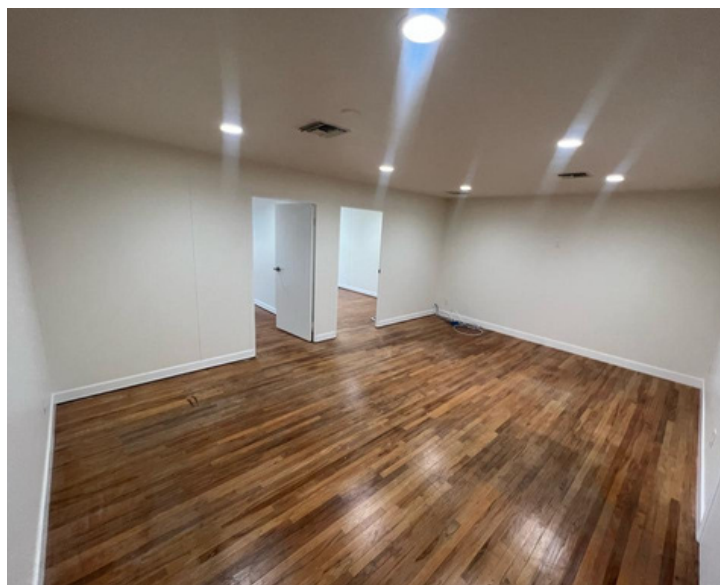
For Lease

2255 Avenida De La Playa
La Jolla, California 92037



CAPITAL GROWTH
PROPERTIES, INC.

Suite 3



For Lease

2255 Avenida De La Playa
La Jolla, California 92037



CAPITAL GROWTH
PROPERTIES, INC.



Todd Law

Senior Vice President
tlaw@cgpinc.com
858.729.9305
Cal DRE Lic. 01309241
WA BRE Lic. 27587



Greg Wagner

Senior Vice President
gwagner@cgpinc.com
858.729.9306
Cal DRE Lic. 01120775



CAPITAL GROWTH
PROPERTIES, INC.



1120 Silverado Street, Suite 200
La Jolla, CA 92037



858.729.9300



www.cgpinc.com



@cgpinc



CAPITAL GROWTH
PROPERTIES, INC.

cgpinc.com