

For Lease

800 Silverado Street
La Jolla, CA 92037



CAPITAL GROWTH
PROPERTIES, INC.

La Jolla Office Space



Property Highlights

- **Prime Location in the Heart of the Village of La Jolla**
- **Subterranean Parking Available**
- **Walk to La Jolla Cove and Other Nearby Beaches**
- **Nearby Renowned Dining and Shopping:** Steps away from top destinations like George's at the Cove, Eddie V's Prime Seafood, Puesto, and La Valencia Hotel.
- **Proximity to Shipping Services:** FedEx, UPS, the Historic La Jolla Post Office, and more!

Available Space

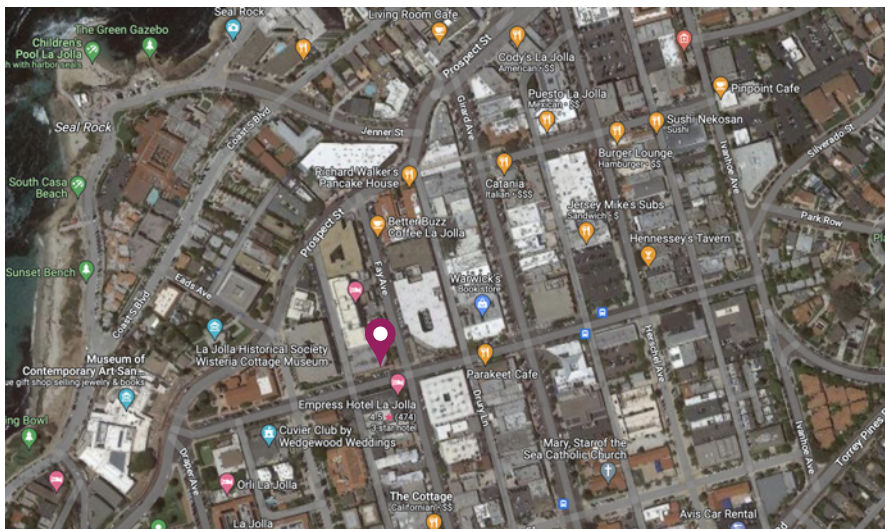
Suite	Size Square Foot	Monthly Rate
300	2,243	\$2.75 PSF + Electric + Janitorial
300-C	Small Office	\$1,150 + Electric + Janitorial
301	3,967	\$2.75 PSF + Electric + Janitorial
301-D	Small Office	\$1,200 + Electric + Janitorial
301-E	Small Office	\$800 + Electric + Janitorial
301-H	Small Office	\$700 + Electric + Janitorial
301-I	Small Office	\$1,000 + Electric + Janitorial
302	2,106	\$2.75 PSF + Electric + Janitorial
302-C	Small Office	\$1,000 + Electric + Janitorial

For Lease

800 Silverado Street
La Jolla, CA 92037



CAPITAL GROWTH
PROPERTIES, INC.



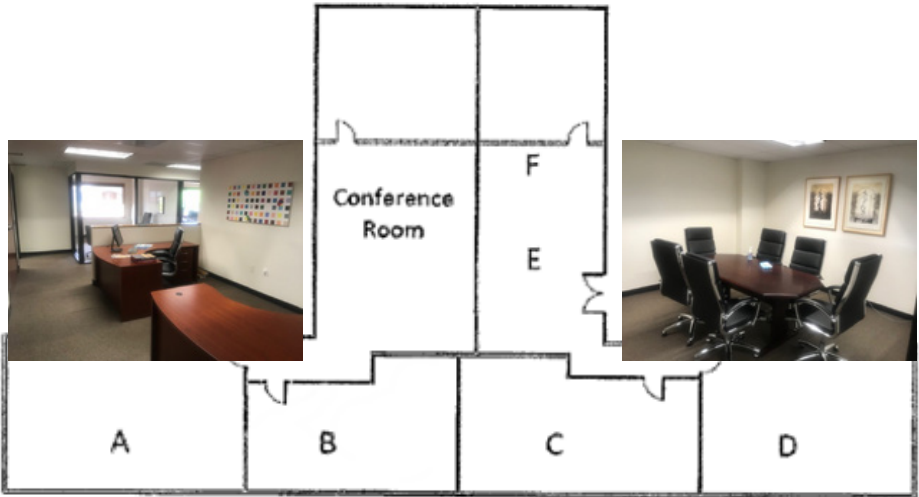
For Lease

800 Silverado Street
La Jolla, CA 92037



CAPITAL GROWTH
PROPERTIES, INC.

Suite 300 & Suite 302-C 2,243 Square Feet and Small Office Office Space



Suite Highlights

- Welcoming Reception Area
- 4 Windowed Offices
- Shared Conference Room for Collaborative Meetings and Presentations

For Lease

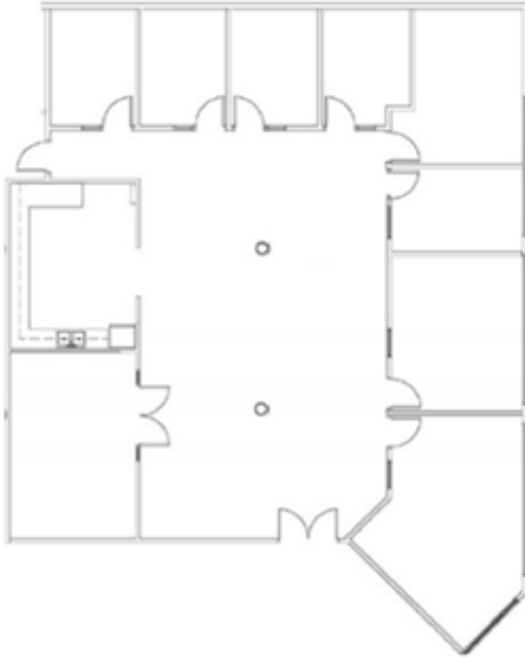
800 Silverado Street
La Jolla, CA 92037



CAPITAL GROWTH
PROPERTIES, INC.

Suite 301

3,967 Square Feet
Office Space



Suite Highlights

- 8 Private Offices for Enhanced Privacy and Productivity
- Spacious Conference Room for Collaborative Meetings
- Well-Equipped Kitchen for Convenient Breaks and Meal Preparation



CAPITAL GROWTH
PROPERTIES, INC.

cgpinc.com

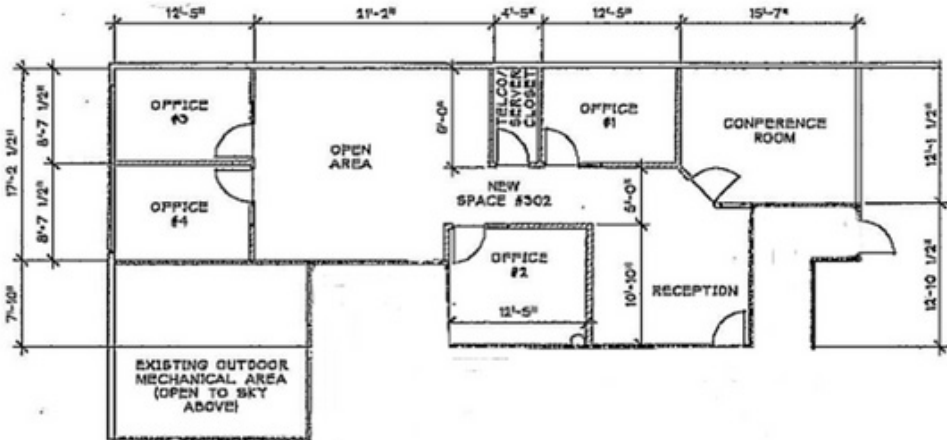
For Lease

800 Silverado Street
La Jolla, CA 92037



CAPITAL GROWTH
PROPERTIES, INC.

Suite 302 2,106 Square Feet Office Space



Suite Highlights

- Four Offices
- Well-Appointed Conference Room
- Welcoming Reception Area
- Open and Flexible Work Area
- Dedicated Server Room



CAPITAL GROWTH
PROPERTIES, INC.

cgpincre.com

For Lease

800 Silverado Street
La Jolla, CA 92037



CAPITAL GROWTH
PROPERTIES, INC.



La Jolla Office Building *Prime Location in the Village of La Jolla*



"I highly recommend working with Jill. You will be guaranteed a professional, respectful working relationship!!"

- Megan C.



Jill Morton

Senior Vice President
jmorton@cgpinc.com
615.955.2877
CA DRE Lic. 00868254

Capital Growth Properties, Inc.



1120 Silverado Street, Suite 200
La Jolla, CA 92037



858.729.9300



www.cgpinc.com



@cgpinc



CAPITAL GROWTH
PROPERTIES, INC.

cgpinc.com