

For Lease

2727 Shelter Island Drive
San Diego, CA 92106



CAPITAL GROWTH
PROPERTIES, INC.

Point Loma
Retail Space



Property Highlights

- **Prime Waterfront Location:** Situated on the ground floor at 2727 Shelter Island Drive, offering stunning views and immediate waterfront access.
- **24/7 Accessibility:** Round-the-clock access to accommodate varying business hours and client needs.
- **Exceptional Amenities:** Features a tranquil courtyard, air conditioning, and ample storage space.
- **Vibrant Dining Options:** Surrounded by a variety of nearby restaurants.
- **Visibility and Branding:** Signage opportunities available to maximize business exposure.

Available Space

Size

Monthly Rate

550 SF

\$1,800

+ Property Taxes + Electricity



For Lease

2727 Shelter Island Drive
San Diego, CA 92106



CAPITAL GROWTH
PROPERTIES, INC.

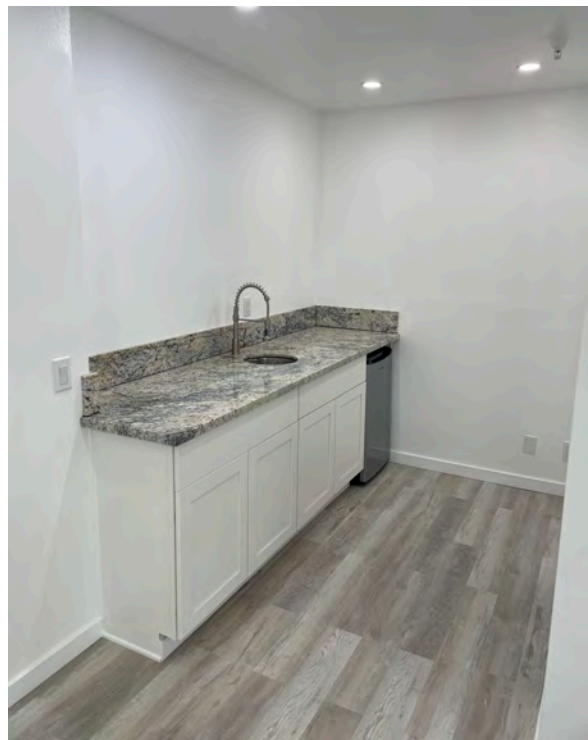


For Lease

2727 Shelter Island Drive
San Diego, CA 92106



CAPITAL GROWTH
PROPERTIES, INC.



For Lease

2727 Shelter Island Drive
San Diego, CA 92106



CAPITAL GROWTH
PROPERTIES, INC.



Ready to elevate your business at this prime waterfront location?
Contact us today for more information or to schedule a tour!



Jill Morton

Senior Vice President
jmorton@cgpinc.com
619.955.2877
Cal BRE Lic. 00868254

Capital Growth Properties, Inc.



1120 Silverado Street, Suite 200
La Jolla, CA 92037



858.729.9300



www.cgpinc.com



@cgpinc