

For Lease

520 Pearl Street

La Jolla, CA 92037



CAPITAL GROWTH
PROPERTIES, INC.

La Jolla
Office/Retail Space



Property Highlights

- **Vibrant Neighbors:** Surrounded by top-tier tenants such as El Pescador Fish Market, The Taco Stand, Breakfast Republic, and more, ensuring consistent foot traffic.
- **Natural Lighting:** Abundant natural light, enhancing your workspace and customer experience.
- **Prime Signage Opportunities:** Excellent visibility with prime signage options to attract passing traffic.
- **Ample Parking:** Convenient parking options for both visitors and staff.
- **Excellent Walkability:** A walk score of 95, labeled as a Walker's Paradise.

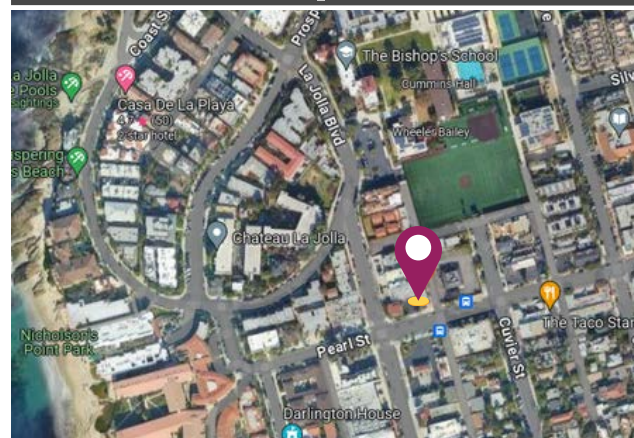
Available Space

Size

Monthly Rate
(PSF)

1,475 SF

\$3.95 + NNN

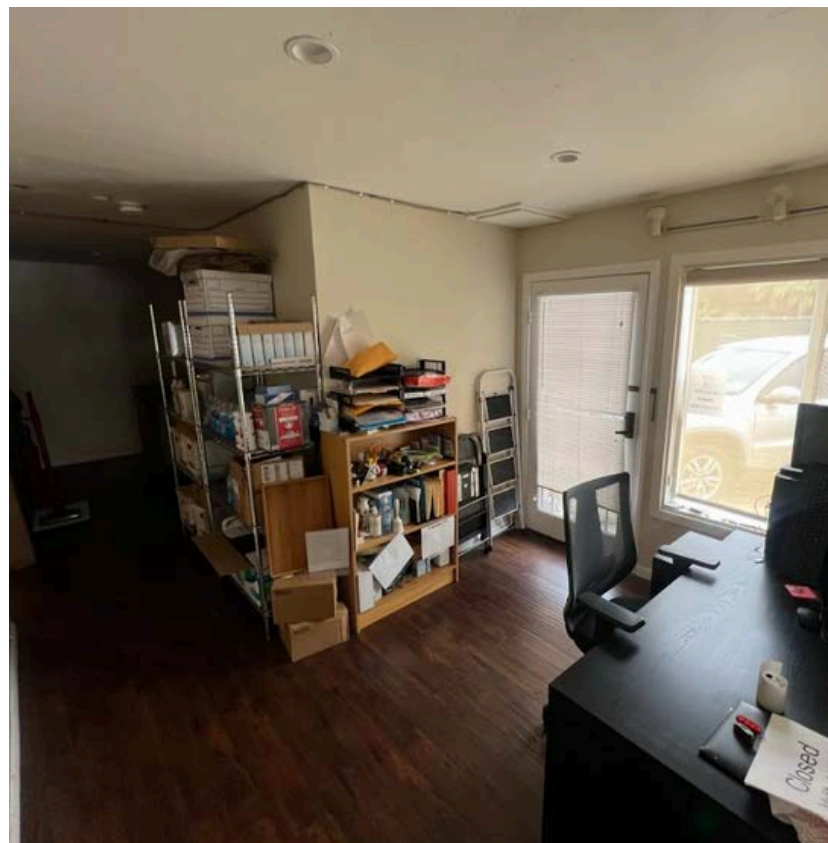


For Lease

520 Pearl Street
La Jolla, CA 92037



CAPITAL GROWTH
PROPERTIES, INC.



For Lease

520 Pearl Street
La Jolla, CA 92037



CAPITAL GROWTH
PROPERTIES, INC.



Neighboring Tenants



SYMBOLIC
INTERNATIONAL



For Lease

520 Pearl Street

La Jolla, CA 92037



CAPITAL GROWTH
PROPERTIES, INC.



Seize this opportunity!

For more information or to schedule a viewing, please contact us today!



Todd Law

Senior Vice President

tlaw@cgpinc.com

858.729.9305

CA DRE Lic: 01309241

WA Lic: 27587

Capital Growth Properties, Inc.



1120 Silverado Street, Suite 200
La Jolla, CA 92037



858.729.9300



www.cgpinc.com



[@cgpinc](https://www.instagram.com/cgpinc)