

# For Lease:

3555 Rosecrans Street  
San Diego, CA 92110



CAPITAL GROWTH  
PROPERTIES, INC.



**Point Loma  
Restaurant/Retail Space**

Suite 101

Suite 103

## Property Highlights

- Premier retail space available for lease!
- Situated at a high-traffic corner location.
- Surrounded by densely populated residential and commercial areas.
- Anchored by notable tenants: CorePower Yoga, Crumbl Cookie, Juicy Burger, UPS, The Joint, and ReStore.



## Available Space

Suite	SF	Monthly Rate
101	2,995	\$5.50 PSF + NNN (\$0.90)
103	946	\$5.00 PSF + NNN (\$0.90)



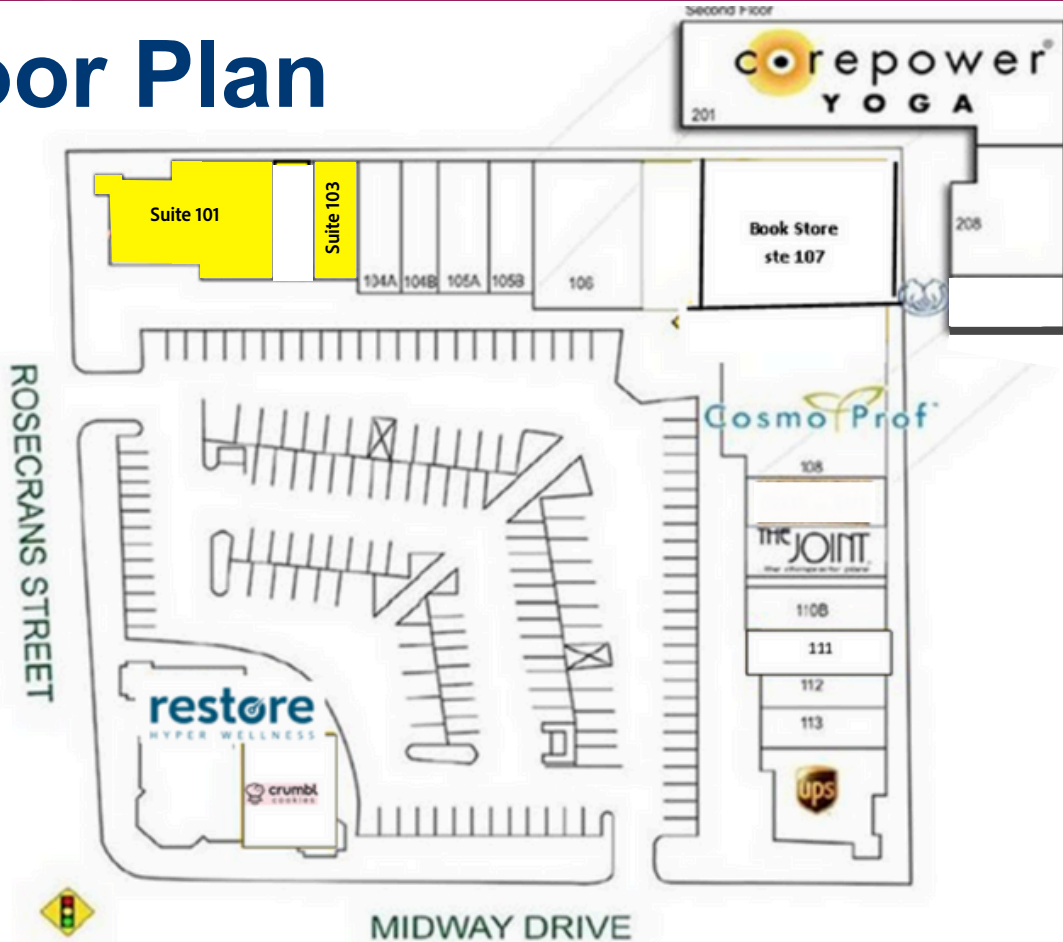
# For Lease:

3555 Rosecrans Street  
San Diego, CA 92110



CAPITAL GROWTH  
PROPERTIES, INC.

## Floor Plan



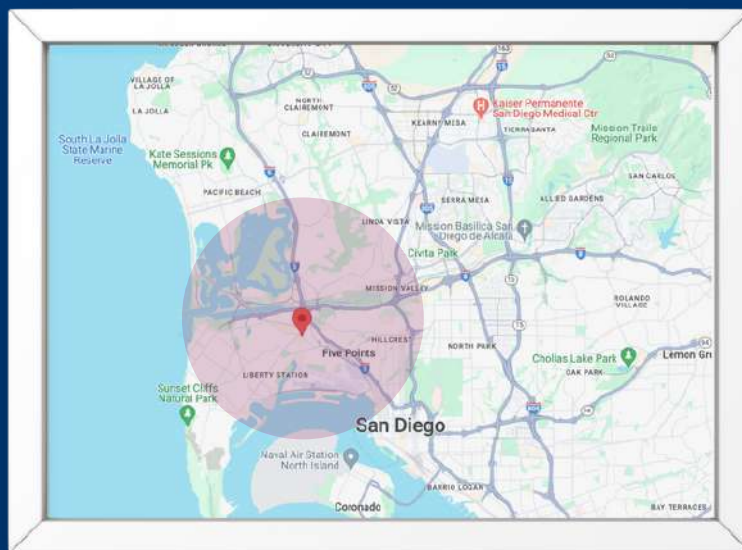
## Within a 3-Mile Reach



San Diego  
International  
Airport



Harbor &  
Shelter Island



Mission &  
Ocean Beach



# For Lease:

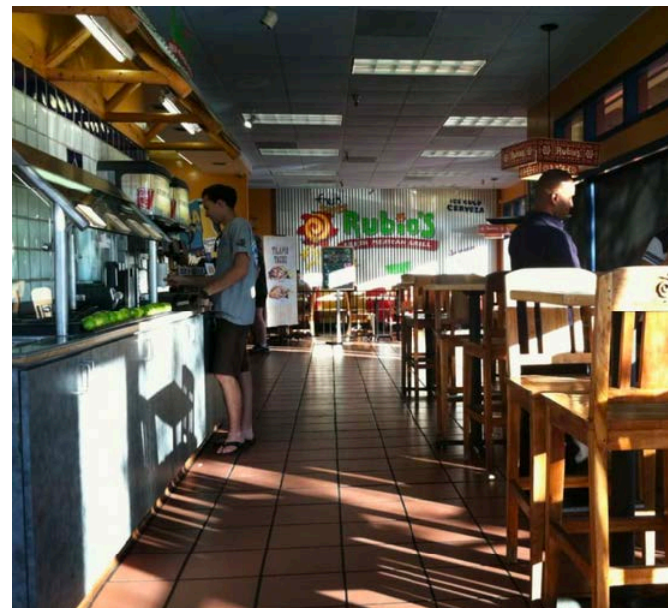
3555 Rosecrans Street  
San Diego, CA 92110



CAPITAL GROWTH  
PROPERTIES, INC.



## Suite 101





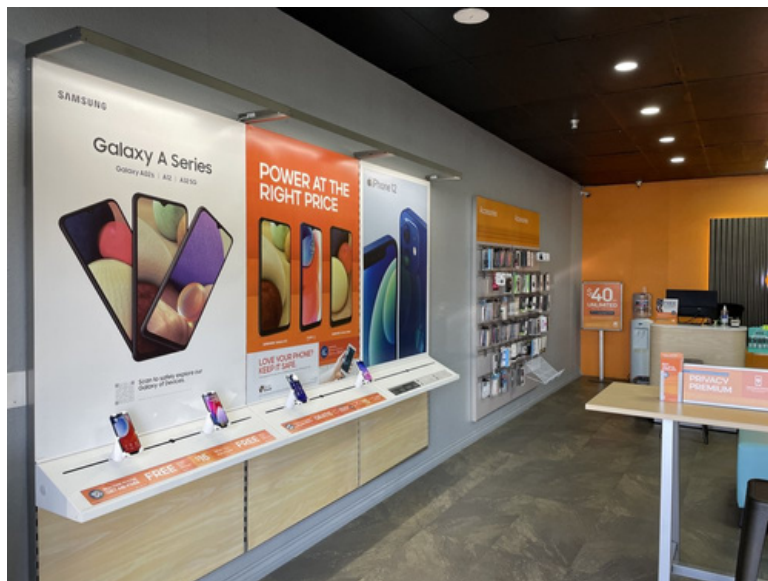
# For Lease:

3555 Rosecrans Street  
San Diego, CA 92110



CAPITAL GROWTH  
PROPERTIES, INC.

## Suite 103



CAPITAL GROWTH  
PROPERTIES, INC.

[cgpinc.com](http://cgpinc.com)

# For Lease:

3555 Rosecrans Street  
San Diego, CA 92110



CAPITAL GROWTH  
PROPERTIES, INC.



**Available now! Contact us for more information.**



**Greg Wagner**


Senior Vice President  
gwagner@cgpinc.com  
858.729.9306  
CA DRE Lic: 01120775



**Jill Morton**

Senior Vice President  
jmorton@cgpinc.com  
619.955.2877  
CA DRE Lic: 00868254

## Capital Growth Properties, Inc.

 1120 Silverado Street, Suite 200  
La Jolla, CA 92037

 858.729.9300

 [www.cgpinc.com](http://www.cgpinc.com)

 @cgpinc