

For Lease

5151 Murphy Canyon Road
San Diego, CA 92123



CAPITAL GROWTH
PROPERTIES, INC.



Property Highlights

- **Prime Location:** Visible from the I-15 in Kearny Mesa, offering excellent freeway access.
- **Signage Available:** Enhance your business's visibility with prominent signage options.
- **Flexible Leasing Terms:** Negotiable rates to suit your business needs.
- **Convenience:** Close to nearby retail, dining, and essential services.
- **Atrium-Style Design:** Features mature landscaping and abundant natural light for a bright, welcoming workspace.

Available Space

Suite	Size
100	2,014 SF
140	1,664 SF
210	1,978 SF
310	2,293 SF



For Lease

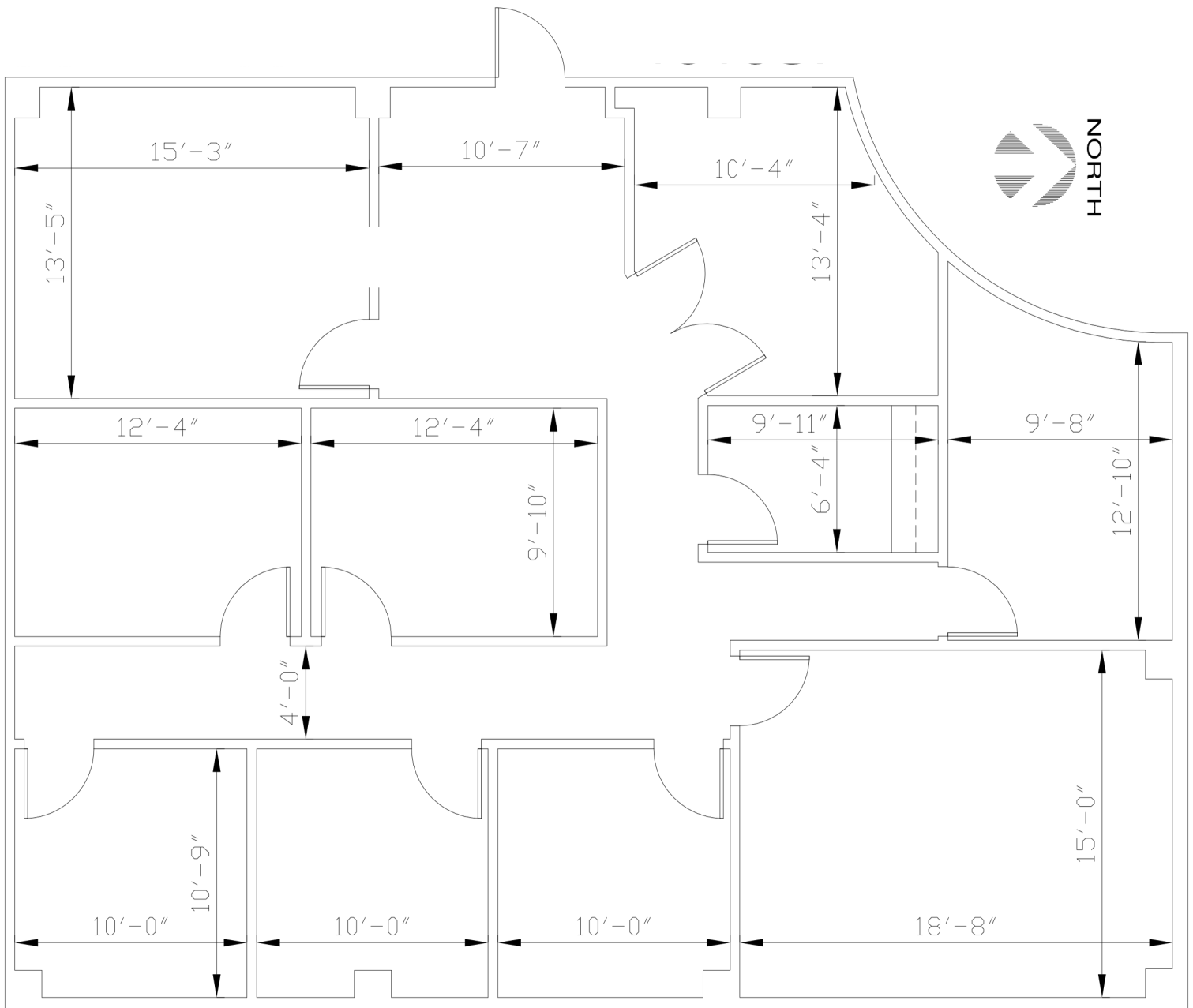
5151 Murphy Canyon Road
San Diego, CA 92123



CAPITAL GROWTH
PROPERTIES, INC.

Suite 100 Floor Plan

Eight Private Offices, a Conference Room, and Storage



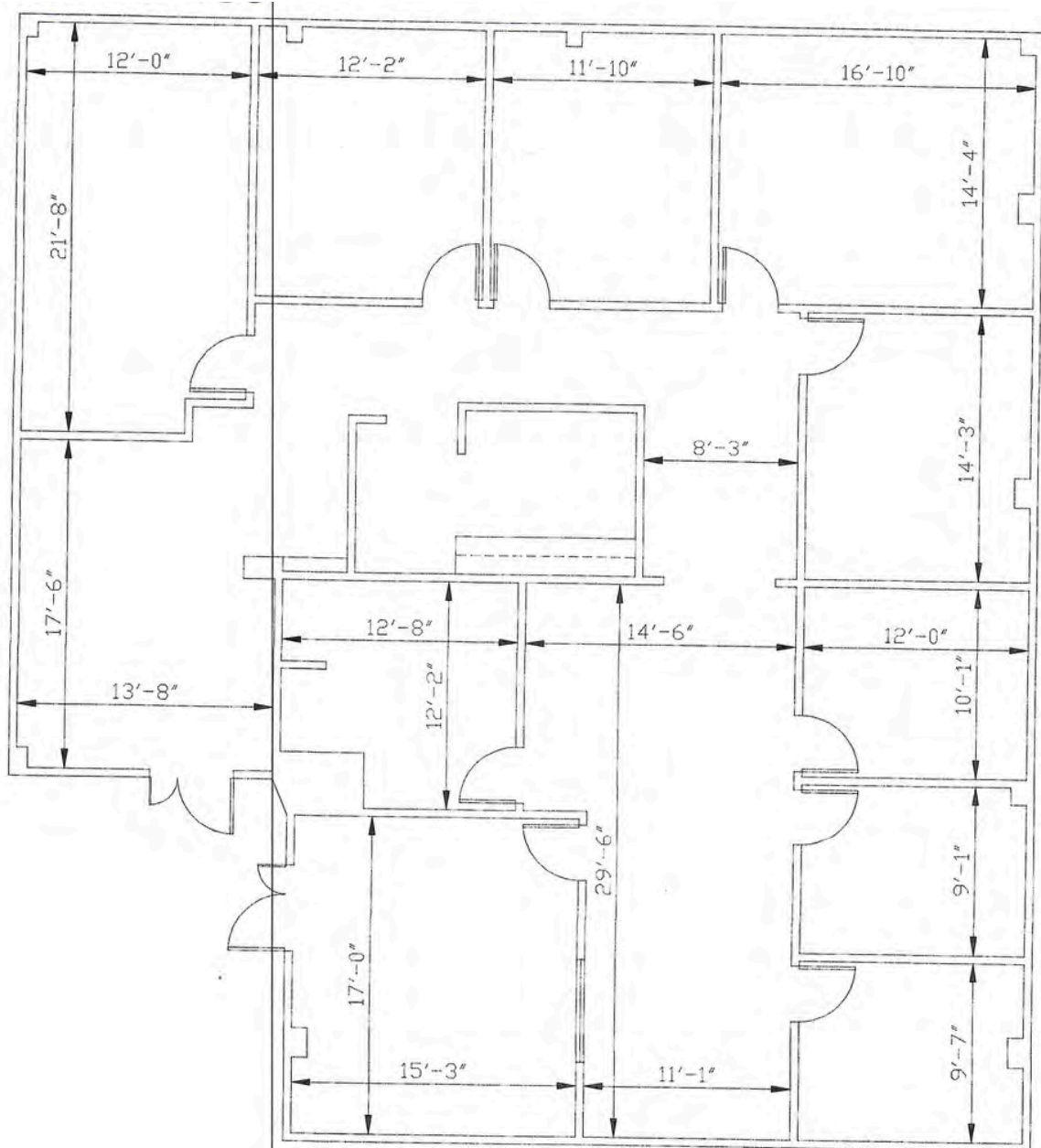
For Lease

5151 Murphy Canyon Road
San Diego, CA 92123



CAPITAL GROWTH
PROPERTIES, INC.

Suites 135 & 140 Floor Plan



For Lease

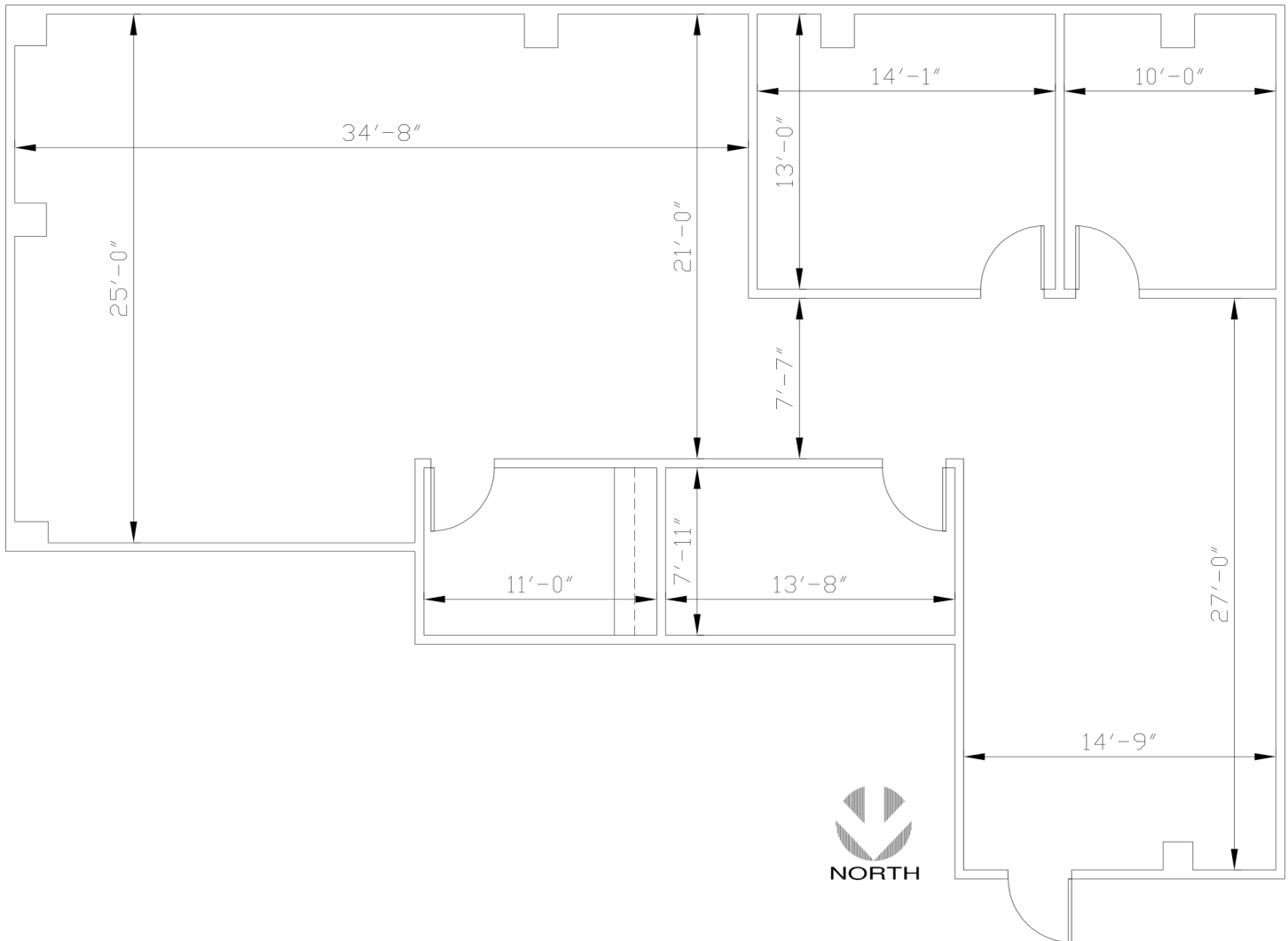
5151 Murphy Canyon Road
San Diego, CA 92123



CAPITAL GROWTH
PROPERTIES, INC.

Suite 210 Floor Plan

Three Private Offices, a Large Reception Area, an
Open Bullpen Area, and a Storage/Copier Room



For Lease

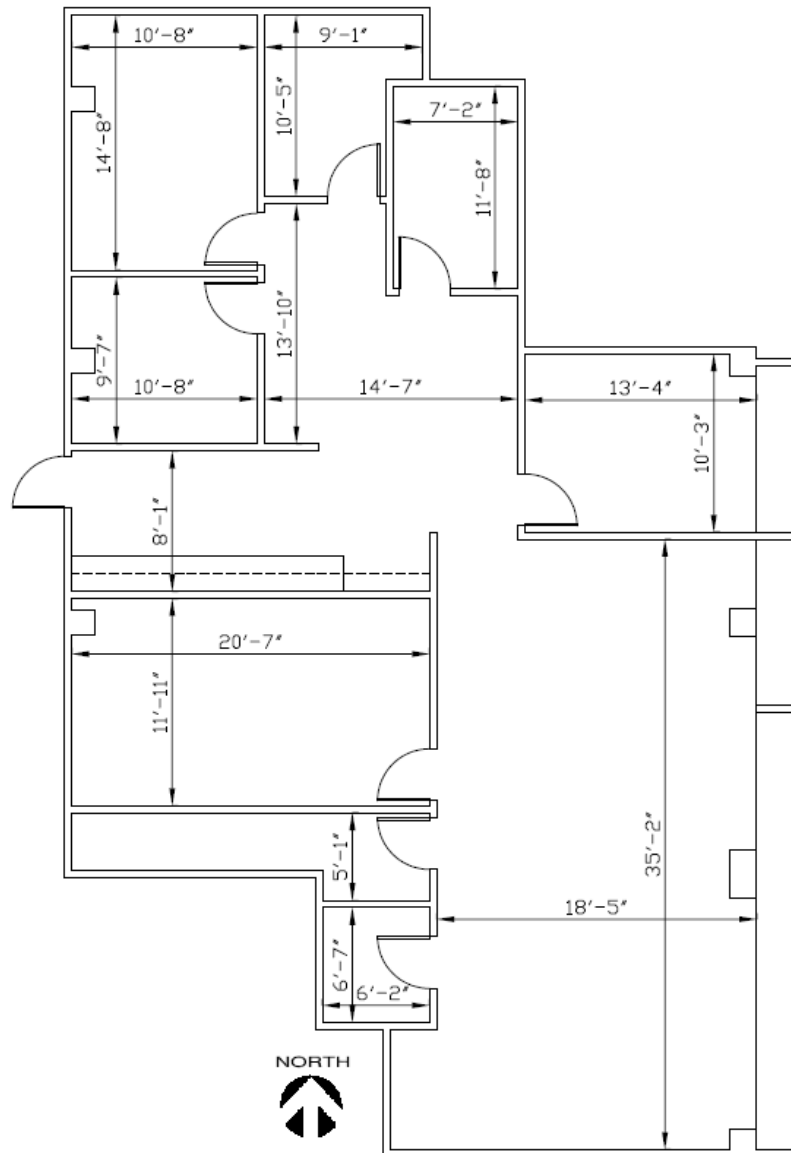
5151 Murphy Canyon Road
San Diego, CA 92123



CAPITAL GROWTH
PROPERTIES, INC.

Suite 310 Floor Plan

Five Private Offices, a Conference Room, an I.T Room,
and a Large Bullpen Area

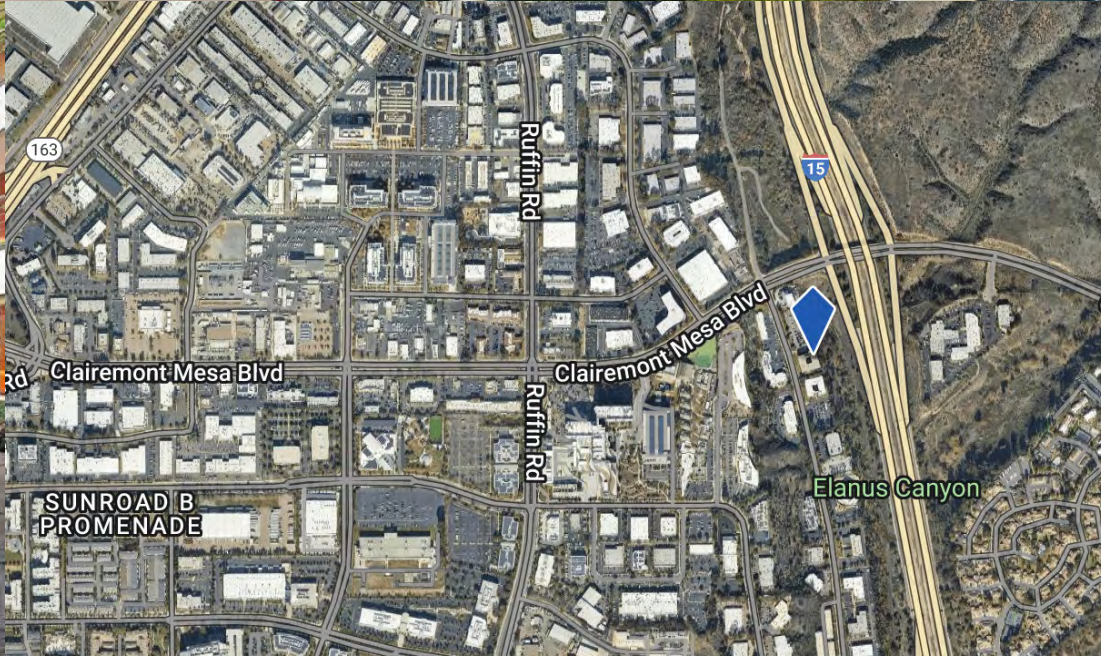


For Lease

5151 Murphy Canyon Road
San Diego, CA 92123



CAPITAL GROWTH
PROPERTIES, INC.



For Lease

5151 Murphy Canyon Road
San Diego, CA 92123



CAPITAL GROWTH
PROPERTIES, INC.



Contact us today to schedule a tour and explore the possibilities
at 5151 Murphy Canyon Road!



Jill Morton

Senior Vice President
jmorton@cgpincre.com
619.955.2877
Cal BRE Lic. 00868254

Capital Growth Properties, Inc.



1120 Silverado Street, Suite 200
La Jolla CA 92037



858.729.9300



www.cgpincre.com



@cgpincre